

For Research Use Only

# Total MMP-10 Recombinant Matched Antibody Pair, PBS Only



Catalog Number:MP02702-1

## Capture Antibody Information

**Catalog Number:**  
86845-2-PBS  
**Host:**  
Rabbit  
**Isotype:**  
IgG  
**Purification Method:**  
Protein A purification

**Clone ID:**  
251067G2  
**Reactivity:**  
human  
**GenBank:**  
NM\_002425.3  
**Immunogen Catalog Number:**  
Eg3038

**Conjugate:**  
Unconjugated  
**Full name:**  
matrix metalloproteinase 10 (stromelysin 2)  
**Gene ID:**  
4319

## Detection Antibody Information

**Catalog Number:**  
86845-1-PBS  
**Host:**  
Rabbit  
**Isotype:**  
IgG  
**Purification Method:**  
Protein A purification

**Clone ID:**  
251067E10  
**Reactivity:**  
human  
**GenBank:**  
NM\_002425.3  
**Immunogen Catalog Number:**  
Eg3038

**Conjugate:**  
Unconjugated  
**Full name:**  
matrix metalloproteinase 10 (stromelysin 2)  
**Gene ID:**  
4319

## Applications

**Tested Applications:**  
Cytometric bead array

**Range:**  
0.625-80 ng/mL (Cytometric Bead Array)

**Recommended Dilutions:**  
It is recommended that this reagent should be titrated in each testing system to obtain optimal results.

## Product Information

MP02702-1 targets Total MMP-10 in immunoassays as a matched antibody pair. Validated in Cytometric bead array.  
Capture antibody: MMP10 Recombinant monoclonal antibody, PBS Only (Capture) 86845-2-PBS (251067G2). 100 µg. Concentration 1 mg/mL.  
Detection antibody: MMP10 Recombinant monoclonal antibody, PBS Only (Detector) 86845-1-PBS (251067E10). 100 µg. Concentration 1 mg/mL.  
Unconjugated rabbit recombinant monoclonal antibody pair in PBS only storage buffer at a concentration of 1 mg/mL, ready for conjugation. Created using Proteintech's proprietary in-house recombinant technology. Recombinant production enables unrivalled batch-to-batch consistency, easy scale-up, and future security of supply. Matched antibody pairs are designed for use in a variety of assays and platforms that require matched antibody pairs.  
Antibody use should be optimized for each application and assay.

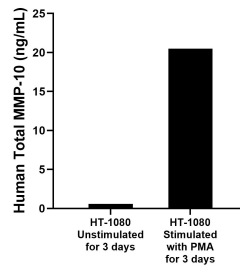
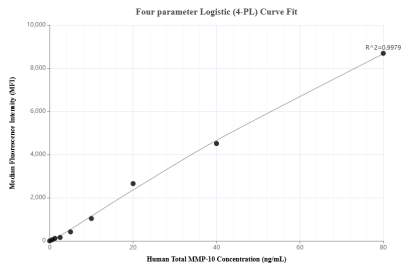
## Storage

**Storage:**  
Store at -80°C.  
**The product is shipped with ice packs. Upon receipt, store it immediately at -80°C**  
**Storage buffer:**  
PBS only

For technical support and original validation data for this product please contact:  
T: 4006900926 E: Proteintech-CN@ptglab.com W: ptgcn.com

This product is exclusively available under Proteintech Group brand and is not available to purchase from any other manufacturer.

## Selected Validation Data



Cytometric bead array standard curve of MP02702-1, Total MMP-10 Recombinant Matched Antibody Pair, PBS Only. Capture antibody: 86845-2-PBS. Detection antibody: 86845-1-PBS. Standard: Eg3038. Range: 0.625-80 ng/mL

HT-1080 human fibrosarcoma cells were cultured in DMEM with 10% fetal bovine serum, 2 mM L-glutamine, 100 U/mL penicillin, and 100  $\mu$ g/mL streptomycin sulfate. Cells were stimulated with PMA. An aliquot of the cell culture supernate was removed, assayed for human Total MMP-10, and measured 20.5 ng/mL