

For Research Use Only

RAB34 Recombinant Matched Antibody Pair, PBS Only



Catalog Number:MP02698-1

Capture Antibody Information

Catalog Number:
86839-2-PBS

Host:
Rabbit

Isotype:
IgG

Purification Method:
Protein A purification

Clone ID:
251867F11

Reactivity:
human

GenBank:
BC016841

Immunogen Catalog Number:
Ag26696

Conjugate:
Unconjugated

Full name:
RAB34, member RAS oncogene family

Gene ID:
83871

Detection Antibody Information

Catalog Number:
86839-1-PBS

Host:
Rabbit

Isotype:
IgG

Purification Method:
Protein A purification

Clone ID:
251867G11

Reactivity:
human

GenBank:
BC016841

Immunogen Catalog Number:
Ag26696

Conjugate:
Unconjugated

Full name:
RAB34, member RAS oncogene family

Gene ID:
83871

Applications

Tested Applications:
Cytometric bead array

Range:
0.469-60 ng/mL (Cytometric Bead Array)

Recommended Dilutions:
It is recommended that this reagent should be titrated in each testing system to obtain optimal results.

Product Information

MP02698-1 targets RAB34 in immunoassays as a matched antibody pair. Validated in Cytometric bead array.

Capture antibody: RAB34 Recombinant monoclonal antibody, PBS Only (Capture) 86839-2-PBS (251867F11). 100 μ g. Concentration 1 mg/mL.

Detection antibody: RAB34 Recombinant monoclonal antibody, PBS Only (Detector) 86839-1-PBS (251867G11). 100 μ g. Concentration 1 mg/mL.

Unconjugated rabbit recombinant monoclonal antibody pair in PBS only storage buffer at a concentration of 1 mg/mL, ready for conjugation. Created using Proteintech's proprietary in-house recombinant technology. Recombinant production enables unrivalled batch-to-batch consistency, easy scale-up, and future security of supply.

Matched antibody pairs are designed for use in a variety of assays and platforms that require matched antibody pairs.

Antibody use should be optimized for each application and assay.

Storage

Storage:

Store at -80°C.

The product is shipped with ice packs. Upon receipt, store it immediately at -80°C

Storage buffer:

PBS only

For technical support and original validation data for this product please contact:

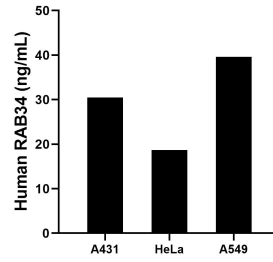
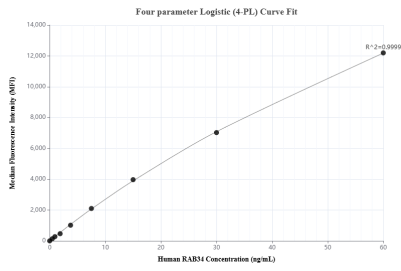
T: 4006900926

E: Proteintech-CN@ptglab.com

W: ptgcn.com

This product is exclusively available under Proteintech Group brand and is not available to purchase from any other manufacturer.

Selected Validation Data



Cytometric bead array standard curve of MPO2698-1, RAB34 Recombinant Matched Antibody Pair, PBS Only. Capture antibody: 86839-2-PBS. Detection antibody: 86839-1-PBS. Standard: Ag26696. Range: 0.469-60 ng/mL

The mean RAB34 concentration was determined to be 30.5 ng/mL in A431 cell extract based on a 1.3 mg/mL extract load, 18.7 ng/mL in HeLa cell extract based on a 1.2 mg/mL extract load, 39.6 ng/mL in A549 cell extract based on a 1.2 mg/mL extract load.