

For Research Use Only

IGF-II R/IGF2R Recombinant Matched Antibody Pair, PBS Only



Catalog Number:MP02694-2

Capture Antibody Information

Catalog Number:
86821-3-PBS
Host:
Rabbit
Isotype:
IgG
Purification Method:
Protein A purification

Clone ID:
251265C10
Reactivity:
human
GenBank:
NM_000876.4
Immunogen Catalog Number:
Eg3488

Conjugate:
Unconjugated
Full name:
insulin-like growth factor 2 receptor
Gene ID:
3482

Detection Antibody Information

Catalog Number:
86821-4-PBS
Host:
Rabbit
Isotype:
IgG
Purification Method:
Protein A purification

Clone ID:
251265B6
Reactivity:
human
GenBank:
NM_000876.4
Immunogen Catalog Number:
Eg3488

Conjugate:
Unconjugated
Full name:
insulin-like growth factor 2 receptor
Gene ID:
3482

Applications

Tested Applications:
Sandwich ELISA

Range:
0.625-40 ng/mL (Sandwich ELISA)

Recommended Dilutions:
It is recommended that this reagent should be titrated in each testing system to obtain optimal results.

Product Information

MP02694-2 targets IGF-II R/IGF2R in immunoassays as a matched antibody pair. Validated in Sandwich ELISA.
Capture antibody: IGF-II R/IGF2R Recombinant monoclonal antibody, PBS Only (Capture) 86821-3-PBS (251265C10). 100 µg. Concentration 1 mg/mL.
Detection antibody: IGF-II R/IGF2R Recombinant monoclonal antibody, PBS Only (Detector) 86821-4-PBS (251265B6). 100 µg. Concentration 1 mg/mL.
Unconjugated rabbit recombinant monoclonal antibody pair in PBS only storage buffer at a concentration of 1 mg/mL, ready for conjugation. Created using Proteintech's proprietary in-house recombinant technology. Recombinant production enables unrivalled batch-to-batch consistency, easy scale-up, and future security of supply.
Matched antibody pairs are designed for use in a variety of assays and platforms that require matched antibody pairs.
Antibody use should be optimized for each application and assay.

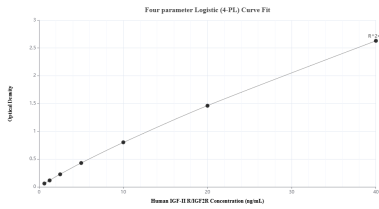
Storage

Storage:
Store at -80°C.
The product is shipped with ice packs. Upon receipt, store it immediately at -80°C
Storage buffer:
PBS only

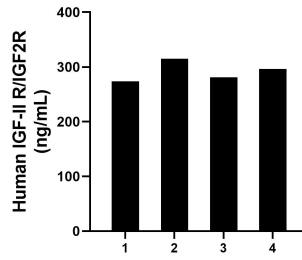
For technical support and original validation data for this product please contact:
T: 4006900926 E: Proteintech-CN@ptglab.com W: ptgcn.com

This product is exclusively available under Proteintech Group brand and is not available to purchase from any other manufacturer.

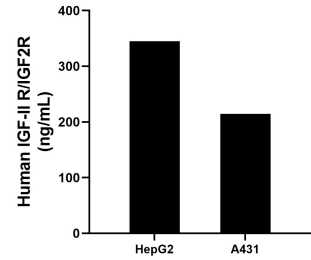
Selected Validation Data



Sandwich ELISA standard curve of MP02694-2, Human IGF-II R/IGF2R Recombinant Matched Antibody Pair - PBS only. 86821-3-PBS was coated to a plate as the capture antibody and incubated with serial dilutions of standard Eg3488. 86821-4-PBS was HRP conjugated as the detection antibody. Range: 0.625-40 ng/mL



Serum of four individual healthy human donors was measured. The human IGF-II R/IGF2R concentration of detected samples was determined to be 291.46 ng/mL with a range of 273.79 - 315.06 ng/mL.



The mean IGF-II R/IGF2R concentration was determined to be 344.83 ng/mL in HepG2 cell extract based on a 1.2 mg/mL extract load and 214.23 ng/mL in A431 cell extract based on a 1.2 mg/mL extract load.