

# Mouse DFNA5/GSDME Recombinant Matched Antibody Pair, PBS Only

Catalog Number: MP02686-1

## Capture Antibody Information

**Catalog Number:**  
82955-3-PBS  
**Host:**  
Rabbit  
**Isotype:**  
IgG  
**Purification Method:**  
Protein A purification

**Clone ID:**  
251415D4  
**Reactivity:**  
mouse  
**GenBank:**  
BC132303  
**Immunogen Catalog Number:**  
Ag33622

**Conjugate:**  
Unconjugated  
**Full name:**  
deafness, autosomal dominant 5 (human)  
**Gene ID:**  
54722

## Detection Antibody Information

**Catalog Number:**  
82955-2-PBS  
**Host:**  
Rabbit  
**Isotype:**  
IgG  
**Purification Method:**  
Protein A purification

**Clone ID:**  
251415B1  
**Reactivity:**  
mouse, rat  
**GenBank:**  
BC132303  
**Immunogen Catalog Number:**  
Ag33622

**Conjugate:**  
Unconjugated  
**Full name:**  
deafness, autosomal dominant 5 (human)  
**Gene ID:**  
54722

## Applications

**Tested Applications:**  
Sandwich ELISA

**Range:**  
0.391-25 ng/mL (Sandwich ELISA)

**Recommended Dilutions:**  
It is recommended that this reagent should be titrated in each testing system to obtain optimal results.

## Product Information

MP02686-1 targets DFNA5/GSDME in immunoassays as a matched antibody pair. Validated in Sandwich ELISA.

Capture antibody: Mouse Dfna5 Recombinant monoclonal antibody, PBS Only (Capture) 82955-3-PBS (251415D4). 100 µg. Concentration 1 mg/mL.

Detection antibody: Mouse DFNA5/GSDME Recombinant monoclonal antibody, PBS Only (Detector) 82955-2-PBS (251415B1). 100 µg. Concentration 1 mg/mL.

Unconjugated rabbit recombinant monoclonal antibody pair in PBS only storage buffer at a concentration of 1 mg/mL, ready for conjugation. Created using Proteintech's proprietary in-house recombinant technology. Recombinant production enables unrivalled batch-to-batch consistency, easy scale-up, and future security of supply.

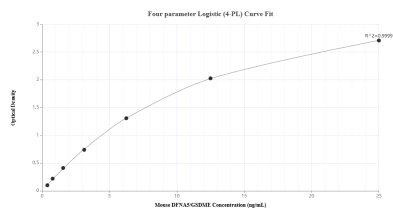
Matched antibody pairs are designed for use in a variety of assays and platforms that require matched antibody pairs.

Antibody use should be optimized for each application and assay.

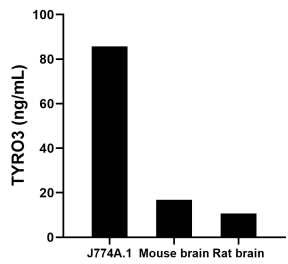
## Storage

**Storage:**  
Store at -80°C.  
**The product is shipped with ice packs. Upon receipt, store it immediately at -80°C**  
**Storage buffer:**  
PBS only

## Selected Validation Data



Sandwich ELISA standard curve of MP02686-1, Mouse DFNA5/GSDME Recombinant Matched Antibody Pair - PBS only. 82955-3-PBS was coated to a plate as the capture antibody and incubated with serial dilutions of standard Ag33622. 82955-2-PBS was HRP conjugated as the detection antibody. Range: 0.391-25 ng/mL



The mean DFNA5/GSDME concentration was determined to be 85.78 ng/mL in J744A.1 cell extract based on a 1.3 mg/mL extract load, 16.86 ng/mL in mouse brain tissue extract based on a 7.0 mg/mL extract load and 10.69 ng/mL in rat brain tissue extract based on a 8.2 mg/mL extract load.