

For Research Use Only

# Mouse Lp-PLA2 Recombinant Matched Antibody Pair, PBS Only



Catalog Number:MP02685-1

## Capture Antibody Information

**Catalog Number:**  
86497-3-PBS  
**Host:**  
Rabbit  
**Isotype:**  
IgG  
**Purification Method:**  
Protein A purification

**Clone ID:**  
250587D1  
**Reactivity:**  
mouse  
**GenBank:**  
NM\_013737.5  
**Immunogen Catalog Number:**  
Eg2686

**Conjugate:**  
Unconjugated  
**Full name:**  
phospholipase A2, group VII (platelet-activating factor acetylhydrolase, plasma)  
**Gene ID:**  
27226

## Detection Antibody Information

**Catalog Number:**  
86497-2-PBS  
**Host:**  
Rabbit  
**Isotype:**  
IgG  
**Purification Method:**  
Protein A purification

**Clone ID:**  
250587C12  
**Reactivity:**  
mouse  
**GenBank:**  
NM\_013737.5  
**Immunogen Catalog Number:**  
Eg2686

**Conjugate:**  
Unconjugated  
**Full name:**  
phospholipase A2, group VII (platelet-activating factor acetylhydrolase, plasma)  
**Gene ID:**  
27226

## Applications

**Tested Applications:**  
Sandwich ELISA

**Range:**  
0.313-20 ng/mL (Sandwich ELISA)

**Recommended Dilutions:**  
It is recommended that this reagent should be titrated in each testing system to obtain optimal results.

## Product Information

MP02685-1 targets Lp-PLA2 in immunoassays as a matched antibody pair. Validated in Sandwich ELISA.

Capture antibody: Mouse Pla2g7 Recombinant monoclonal antibody, PBS Only (Capture) 86497-3-PBS (250587D1). 100 µg. Concentration 1 mg/mL.

Detection antibody: Mouse Pla2g7 Recombinant monoclonal antibody, PBS Only (Detector) 86497-2-PBS (250587C12). 100 µg. Concentration 1 mg/mL.

Unconjugated rabbit recombinant monoclonal antibody pair in PBS only storage buffer at a concentration of 1 mg/mL, ready for conjugation. Created using Proteintech's proprietary in-house recombinant technology. Recombinant production enables unrivalled batch-to-batch consistency, easy scale-up, and future security of supply.

Matched antibody pairs are designed for use in a variety of assays and platforms that require matched antibody pairs.

Antibody use should be optimized for each application and assay.

## Storage

**Storage:**  
Store at -80°C.  
**The product is shipped with ice packs. Upon receipt, store it immediately at -80°C**  
**Storage buffer:**  
PBS only

For technical support and original validation data for this product please contact:

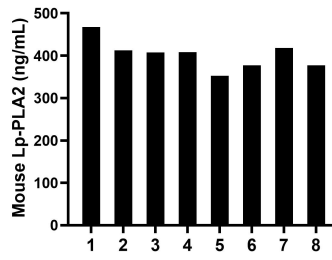
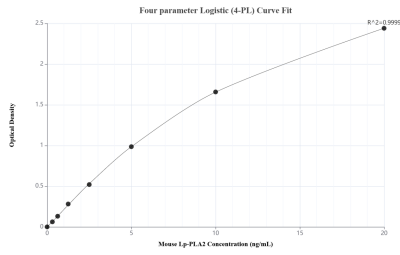
T: 4006900926

E: Proteintech-CN@ptglab.com

W: ptgcn.com

**This product is exclusively available under Proteintech Group brand and is not available to purchase from any other manufacturer.**

## Selected Validation Data



Sandwich ELISA standard curve of MP02685-1, Mouse Lp-PLA2 Recombinant Matched Antibody Pair - PBS only. 86497-3-PBS was coated to a plate as the capture antibody and incubated with serial dilutions of standard Eg2686. 86497-2-PBS was HRP conjugated as the detection antibody. Range: 0.313-20 ng/mL

Serum of eight mice was measured. The Lp-PLA2 concentration of detected samples was determined to be 402.70 ng/mL with a range of 352.59-467.59 ng/mL