

NUP153 Recombinant Matched Antibody Pair, PBS Only

Catalog Number: MP02679-1

Capture Antibody Information

Catalog Number: 86622-1-PBS	Clone ID: 251519G11	Conjugate: Unconjugated
Host: Rabbit	Reactivity: human, mouse	Full name: nucleoporin 153kDa
Isotype: IgG	GenBank: BC052965	Gene ID: 9972
Purification Method: Protein A purification	Immunogen Catalog Number: Ag5519	

Detection Antibody Information

Catalog Number: 86622-2-PBS	Clone ID: 251519B2	Conjugate: Unconjugated
Host: Rabbit	Reactivity: human	Full name: nucleoporin 153kDa
Isotype: IgG	GenBank: BC052965	Gene ID: 9972
Purification Method: Protein A purification	Immunogen Catalog Number: Ag5519	

Applications

Tested Applications: Sandwich ELISA	Range: 1.56-100 ng/mL (Sandwich ELISA)	Recommended Dilutions: It is recommended that this reagent should be titrated in each testing system to obtain optimal results.
---	--	---

Product Information

MP02679-1 targets NUP153 in immunoassays as a matched antibody pair. Validated in Sandwich ELISA.

Capture antibody: NUP153 Recombinant monoclonal antibody, PBS Only (Capture) 86622-1-PBS (251519G11). 100 µg. Concentration 1 mg/mL.

Detection antibody: NUP153 Recombinant monoclonal antibody, PBS Only (Detector) 86622-2-PBS (251519B2). 100 µg. Concentration 1 mg/mL.

Unconjugated rabbit recombinant monoclonal antibody pair in PBS only storage buffer at a concentration of 1 mg/mL, ready for conjugation. Created using Proteintech's proprietary in-house recombinant technology. Recombinant production enables unrivalled batch-to-batch consistency, easy scale-up, and future security of supply.

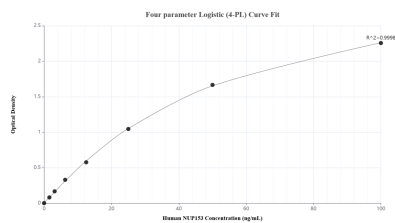
Matched antibody pairs are designed for use in a variety of assays and platforms that require matched antibody pairs.

Antibody use should be optimized for each application and assay.

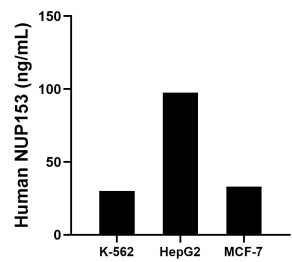
Storage

Storage:
Store at -80°C.
The product is shipped with ice packs. Upon receipt, store it immediately at -80°C
Storage buffer:
PBS only

Selected Validation Data



Sandwich ELISA standard curve of MP02679-1, Human NUP153 Recombinant Matched Antibody Pair - PBS only. 86622-1-PBS was coated to a plate as the capture antibody and incubated with serial dilutions of standard Ag5519. 86622-2-PBS was HRP conjugated as the detection antibody. Range: 1.56-100 ng/mL.



The mean NUP153 concentration was determined to be 30.07 ng/mL in K-562 cell extract based on a 1.20 mg/mL extract load, 97.51 ng/mL in HepG2 cell extract based on a 1.20 mg/mL extract load and 33.07 ng/mL in MCF-7 cell extract based on a 1.20 mg/mL extract load.