

For Research Use Only

ZAG/AZGP1 Recombinant Matched Antibody Pair, PBS Only



Catalog Number:MP02669-2

Capture Antibody Information

Catalog Number:
86781-2-PBS

Host:
Rabbit

Isotype:
IgG

Purification Method:
Protein A purification

Clone ID:
251605A1

Reactivity:
human

GenBank:
BC033830

Immunogen Catalog Number:
Eg6736

Conjugate:
Unconjugated

Full name:
alpha-2-glycoprotein 1, zinc-binding

Gene ID:
563

Detection Antibody Information

Catalog Number:
86781-3-PBS

Host:
Rabbit

Isotype:
IgG

Purification Method:
Protein A purification

Clone ID:
251605B9

Reactivity:
human

GenBank:
BC033830

Immunogen Catalog Number:
Eg6736

Conjugate:
Unconjugated

Full name:
alpha-2-glycoprotein 1, zinc-binding

Gene ID:
563

Applications

Tested Applications:
Sandwich ELISA

Range:
0.156-10 ng/mL (Sandwich ELISA)

Recommended Dilutions:
It is recommended that this reagent should be titrated in each testing system to obtain optimal results.

Product Information

MP02669-2 targets ZAG/AZGP1 in immunoassays as a matched antibody pair. Validated in Sandwich ELISA.

Capture antibody: AZGP1 Recombinant monoclonal antibody, PBS Only (Capture) 86781-2-PBS (251605A1). 100 µg. Concentration 1 mg/mL.

Detection antibody: Zinc Alpha 2 Glycoprotein Recombinant monoclonal antibody, PBS Only (Detector) 86781-3-PBS (251605B9). 100 µg. Concentration 1 mg/mL.

Unconjugated rabbit recombinant monoclonal antibody pair in PBS only storage buffer at a concentration of 1 mg/mL, ready for conjugation. Created using Proteintech's proprietary in-house recombinant technology. Recombinant production enables unrivalled batch-to-batch consistency, easy scale-up, and future security of supply.

Matched antibody pairs are designed for use in a variety of assays and platforms that require matched antibody pairs.

Antibody use should be optimized for each application and assay.

Storage

Storage:

Store at -80°C.

The product is shipped with ice packs. Upon receipt, store it immediately at -80°C

Storage buffer:

PBS only

For technical support and original validation data for this product please contact:

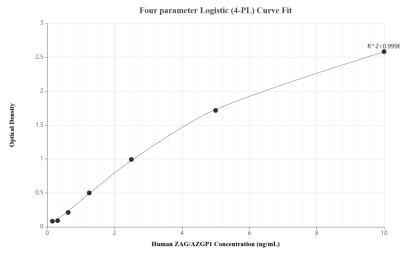
T: 4006900926

E: Proteintech-CN@ptglab.com

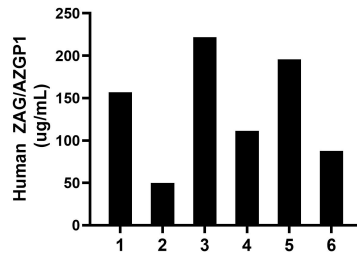
W: ptgcn.com

This product is exclusively available under Proteintech Group brand and is not available to purchase from any other manufacturer.

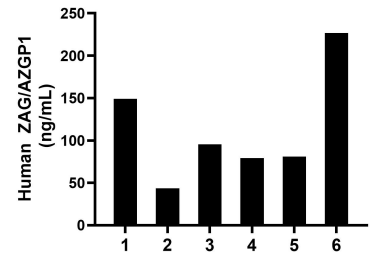
Selected Validation Data



Sandwich ELISA standard curve of MP02669-2, Human ZAG/AZGP1 Recombinant Matched Antibody Pair - PBS only. 86781-2-PBS was coated to a plate as the capture antibody and incubated with serial dilutions of standard Eg6736. 86781-3-PBS was HRP conjugated as the detection antibody. Range: 0.156-10 ng/mL



Plasma of six individual healthy human donors was measured. The ZAG/AZGP1 concentration of detected samples was determined to be 137.18 ug/mL with a range of 49.90-221.70 ug/mL



Urine of six individual healthy human donors was measured. The ZAG/AZGP1 concentration of detected samples was determined to be 112.47 ng/mL with a range of 43.71-226.60 ng/mL