

For Research Use Only

CCL3/MIP-1 alpha Recombinant Matched Antibody Pair, PBS Only



Catalog Number:MP02665-2

Capture Antibody Information

Catalog Number:
86780-1-PBS

Host:
Rabbit

Isotype:
IgG

Purification Method:
Protein A purification

Clone ID:
251524A10

Reactivity:
human

GenBank:
BC071834

Immunogen Catalog Number:
Eg3309

Conjugate:
Unconjugated

Full name:
chemokine (C-C motif) ligand 3

Gene ID:
6348

Detection Antibody Information

Catalog Number:
86780-4-PBS

Host:
Rabbit

Isotype:
IgG

Purification Method:
Protein A purification

Clone ID:
251524F2

Reactivity:
human

GenBank:
BC071834

Immunogen Catalog Number:
Eg3309

Conjugate:
Unconjugated

Full name:
chemokine (C-C motif) ligand 3

Gene ID:
6348

Applications

Tested Applications:
Sandwich ELISA

Range:
78.1-5000 pg/mL (Sandwich ELISA)

Recommended Dilutions:
It is recommended that this reagent should be titrated in each testing system to obtain optimal results.

Product Information

MP02665-2 targets CCL3/MIP-1 alpha in immunoassays as a matched antibody pair. Validated in Sandwich ELISA.

Capture antibody: CCL3 Recombinant monoclonal antibody, PBS Only (Capture/Detector) 86780-1-PBS (251524A10). 100 µg. Concentration 1 mg/mL.

Detection antibody: CCL3 Recombinant monoclonal antibody, PBS Only (Detector) 86780-4-PBS (251524F2). 100 µg. Concentration 1 mg/mL.

Unconjugated rabbit recombinant monoclonal antibody pair in PBS only storage buffer at a concentration of 1 mg/mL, ready for conjugation. Created using Proteintech's proprietary in-house recombinant technology. Recombinant production enables unrivalled batch-to-batch consistency, easy scale-up, and future security of supply.

Matched antibody pairs are designed for use in a variety of assays and platforms that require matched antibody pairs.

Antibody use should be optimized for each application and assay.

Storage

Storage:

Store at -80°C.

The product is shipped with ice packs. Upon receipt, store it immediately at -80°C

Storage buffer:

PBS only

For technical support and original validation data for this product please contact:

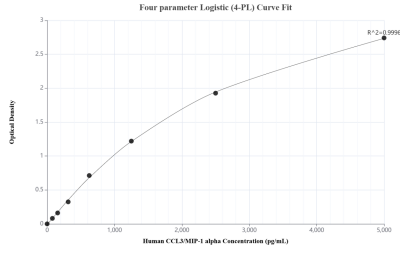
T: 4006900926

E: Proteintech-CN@ptglab.com

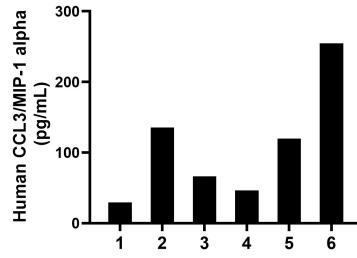
W: ptgcn.com

This product is exclusively available under Proteintech Group brand and is not available to purchase from any other manufacturer.

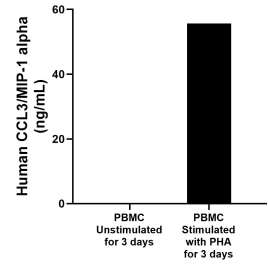
Selected Validation Data



Sandwich ELISA standard curve of MP02665-2, Human CCL3/MIP-1 alpha Recombinant Matched Antibody Pair - PBS only. 86780-1-PBS was coated to a plate as the capture antibody and incubated with serial dilutions of standard Eg3309. 86780-4-PBS was HRP conjugated as the detection antibody. Range: 78.1-5000 pg/mL



Plasma of six individual healthy human donors was measured. The CCL3/MIP-1 alpha concentration of detected samples was determined to be 108.7 pg/mL with a range of 29.6-254.7 pg/mL



Human peripheral blood mononuclear cells (PBMC) were cultured unstimulated or stimulated with 10 μ g/mL PHA for 3 days. The mean CCL3/MIP-1 alpha concentration was determined to be 0.1 ng/mL in unstimulated PBMC supernatant, 55.6 ng/mL in PHA stimulated PBMC supernatant.