

For Research Use Only

CCL3/MIP-1 alpha Recombinant Matched Antibody Pair, PBS Only



Catalog Number:MP02665-1

Capture Antibody Information

Catalog Number:
86780-2-PBS

Host:
Rabbit

Isotype:
IgG

Purification Method:
Protein A purification

Clone ID:
251524G2

Reactivity:
human

GenBank:
BC071834

Immunogen Catalog Number:
Eg3309

Conjugate:
Unconjugated

Full name:
chemokine (C-C motif) ligand 3

Gene ID:
6348

Detection Antibody Information

Catalog Number:
86780-1-PBS

Host:
Rabbit

Isotype:
IgG

Purification Method:
Protein A purification

Clone ID:
251524A10

Reactivity:
human

GenBank:
BC071834

Immunogen Catalog Number:
Eg3309

Conjugate:
Unconjugated

Full name:
chemokine (C-C motif) ligand 3

Gene ID:
6348

Applications

Tested Applications:
Cytometric bead array

Range:
0.469-60 ng/mL (Cytometric Bead Array)

Recommended Dilutions:
It is recommended that this reagent should be titrated in each testing system to obtain optimal results.

Product Information

MP02665-1 targets CCL3/MIP-1 alpha in immunoassays as a matched antibody pair. Validated in Cytometric bead array.

Capture antibody: CCL3 Recombinant monoclonal antibody, PBS Only (Capture) 86780-2-PBS (251524G2). 100 µg. Concentration 1 mg/mL.

Detection antibody: CCL3 Recombinant monoclonal antibody, PBS Only (Capture/Detector) 86780-1-PBS (251524A10). 100 µg. Concentration 1 mg/mL.

Unconjugated rabbit recombinant monoclonal antibody pair in PBS only storage buffer at a concentration of 1 mg/mL, ready for conjugation. Created using Proteintech's proprietary in-house recombinant technology. Recombinant production enables unrivalled batch-to-batch consistency, easy scale-up, and future security of supply.

Matched antibody pairs are designed for use in a variety of assays and platforms that require matched antibody pairs.

Antibody use should be optimized for each application and assay.

Storage

Storage:
Store at -80°C.

The product is shipped with ice packs. Upon receipt, store it immediately at -80°C

Storage buffer:
PBS only

For technical support and original validation data for this product please contact:

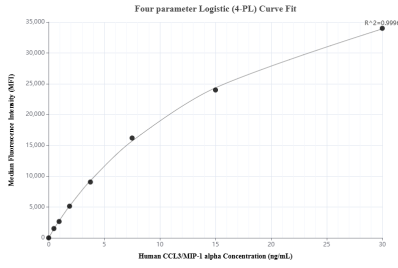
T: 4006900926

E: Proteintech-CN@ptglab.com

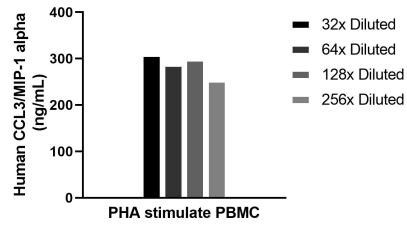
W: ptgcn.com

This product is exclusively available under Proteintech Group brand and is not available to purchase from any other manufacturer.

Selected Validation Data



Cytometric bead array standard curve of MPO2665-1, CCL3/MIP-1 alpha Recombinant Matched Antibody Pair, PBS Only. Capture antibody: 86780-2-PBS. Detection antibody: 86780-1-PBS. Standard: Eg3309. Range: 0.469-60 ng/mL



Human peripheral blood mononuclear cells (1×10^6 cells/mL) were cultured in RPMI supplemented with 8% fetal bovine serum, $50 \mu\text{M}$ β -mercaptoethanol, 2 mM L-glutamine, 100 U/mL penicillin and 100 $\mu\text{g}/\text{mL}$ streptomycin sulfate. Cells were stimulated with $10 \mu\text{g}/\text{mL}$ PHA. Aliquots of the cell culture supernatants were removed on days 5 assayed for levels of human CCL3/MIP-1 alpha, and measured 286.0 ng/mL