

Surfactant protein D Recombinant Matched Antibody Pair, PBS Only

Catalog Number: **MP02661-1**

Capture Antibody Information

Catalog Number: 86416-4-PBS	Clone ID: 250947A5	Conjugate: Unconjugated
Host: Rabbit	Reactivity: human	Full name: surfactant protein D
Isotype: IgG	GenBank: NM_003019.5	Gene ID: 6441
Purification Method: Protein A purification	Immunogen Catalog Number: Eg4996	

Detection Antibody Information

Catalog Number: 86416-3-PBS	Clone ID: 250947D9	Conjugate: Unconjugated
Host: Rabbit	Reactivity: human	Full name: surfactant protein D
Isotype: IgG	GenBank: NM_003019.5	Gene ID: 6441
Purification Method: Protein A purification	Immunogen Catalog Number: Eg4996	

Applications

Tested Applications: Sandwich ELISA	Range: 0.156-10 ng/mL (Sandwich ELISA)	Recommended Dilutions: It is recommended that this reagent should be titrated in each testing system to obtain optimal results.
---	--	---

Product Information

MP02661-1 targets Surfactant protein D in immunoassays as a matched antibody pair. Validated in Sandwich ELISA.

Capture antibody: SP-D/SFTPD Recombinant monoclonal antibody, PBS Only (Capture) 86416-4-PBS (250947A5).
100 µg. Concentration 1 mg/mL.

Detection antibody: SP-D/SFTPD Recombinant monoclonal antibody, PBS Only (Detector) 86416-3-PBS (250947D9).
100 µg. Concentration 1 mg/mL.

Unconjugated rabbit recombinant monoclonal antibody pair in PBS only storage buffer at a concentration of 1 mg/mL, ready for conjugation. Created using Proteintech's proprietary in-house recombinant technology. Recombinant production enables unrivalled batch-to-batch consistency, easy scale-up, and future security of supply.

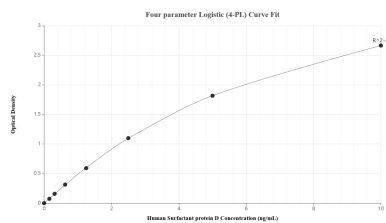
Matched antibody pairs are designed for use in a variety of assays and platforms that require matched antibody pairs.

Antibody use should be optimized for each application and assay.

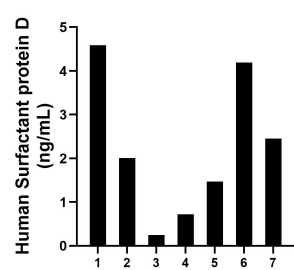
Storage

Storage:
Store at -80°C.
The product is shipped with ice packs. Upon receipt, store it immediately at -80°C
Storage buffer:
PBS only

Selected Validation Data



Sandwich ELISA standard curve of MP02661-1, Human Surfactant protein D Recombinant Matched Antibody Pair - PBS only. 86416-4-PBS was coated to a plate as the capture antibody and incubated with serial dilutions of standard Eg4996. 86416-3-PBS was HRP conjugated as the detection antibody. Range: 0.156-10 ng/mL



Plasma of seven individual healthy human donors was measured. The Surfactant protein D concentration of detected samples was determined to be 2.24 ng/mL with a range of 0.25-4.59 ng/mL.