

For Research Use Only



CHI3L2 Recombinant Matched Antibody Pair, PBS Only

Catalog Number:MP02660-1

Capture Antibody Information

Catalog Number:

86417-3-PBS

Host:

Rabbit

Isotype:

IgG

Purification Method:

Protein A purification

Clone ID:

251060H6

Reactivity:

human

GenBank:

BC011460

Immunogen Catalog Number:

Ag26386

Conjugate:

Unconjugated

Full name:

chitinase 3-like 2

Gene ID:

1117

Detection Antibody Information

Catalog Number:

86417-2-PBS

Host:

Rabbit

Isotype:

IgG

Purification Method:

Protein A purification

Clone ID:

251060H3

Reactivity:

human

GenBank:

BC011460

Immunogen Catalog Number:

Ag26386

Conjugate:

Unconjugated

Full name:

chitinase 3-like 2

Gene ID:

1117

Applications

Tested Applications:

Sandwich ELISA

Range:

0.195-12.5 ng/mL (Sandwich ELISA)

Recommended Dilutions:

It is recommended that this reagent should be titrated in each testing system to obtain optimal results.

Product Information

MP02660-1 targets CHI3L2 in immunoassays as a matched antibody pair. Validated in Sandwich ELISA.

Capture antibody: CHI3L2 Recombinant monoclonal antibody, PBS Only (Capture) 86417-3-PBS (251060H6). 100 μ g. Concentration 1 mg/mL.

Detection antibody: CHI3L2 Recombinant monoclonal antibody, PBS Only (Detector) 86417-2-PBS (251060H3). 100 μ g. Concentration 1 mg/mL.

Unconjugated rabbit recombinant monoclonal antibody pair in PBS only storage buffer at a concentration of 1 mg/mL, ready for conjugation. Created using Proteintech's proprietary in-house recombinant technology. Recombinant production enables unrivalled batch-to-batch consistency, easy scale-up, and future security of supply.

Matched antibody pairs are designed for use in a variety of assays and platforms that require matched antibody pairs.

Antibody use should be optimized for each application and assay.

Storage

Storage:

Store at -80°C.

The product is shipped with ice packs. Upon receipt, store it immediately at -80°C

Storage buffer:

PBS only

For technical support and original validation data for this product please contact:

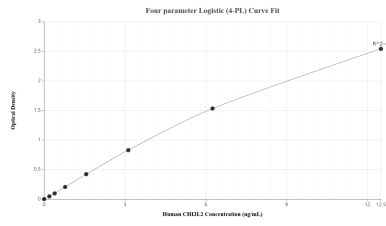
T: 4006900926

E: Proteintech-CN@ptglab.com

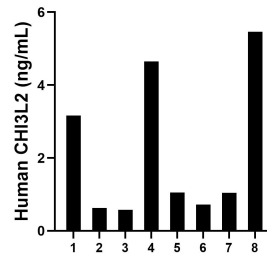
W: ptgcn.com

This product is exclusively available under Proteintech Group brand and is not available to purchase from any other manufacturer.

Selected Validation Data



Sandwich ELISA standard curve of MP02660-1, Human CHI3L2 Recombinant Matched Antibody Pair - PBS only. 86417-3-PBS was coated to a plate as the capture antibody and incubated with serial dilutions of standard Ag26386. 86417-2-PBS was HRP conjugated as the detection antibody. Range: 0.195-12.5 ng/mL.



Plasma of eight individual healthy human donors was measured. The CHI3L2 concentration of detected samples was determined to be 2.16 ng/mL with a range of 0.58-5.46 ng/mL.