

For Research Use Only

RCAN2 Recombinant Matched Antibody Pair, PBS Only



Catalog Number:MP02659-1

Capture Antibody Information

Catalog Number:
86561-3-PBS

Host:
Rabbit

Isotype:
IgG

Purification Method:
Protein A purification

Clone ID:
251381F9

Reactivity:
human

GenBank:
BC038509

Immunogen Catalog Number:
Ag3597

Conjugate:
Unconjugated

Full name:
regulator of calcineurin 2

Gene ID:
10231

Detection Antibody Information

Catalog Number:
86561-2-PBS

Host:
Rabbit

Isotype:
IgG

Purification Method:
Protein A purification

Clone ID:
251381F2

Reactivity:
human

GenBank:
BC038509

Immunogen Catalog Number:
Ag3597

Conjugate:
Unconjugated

Full name:
regulator of calcineurin 2

Gene ID:
10231

Applications

Tested Applications:
Sandwich ELISA

Range:
0.313-20 ng/mL (Sandwich ELISA)

Recommended Dilutions:
It is recommended that this reagent should be titrated in each testing system to obtain optimal results.

Product Information

MP02659-1 targets RCAN2 in immunoassays as a matched antibody pair. Validated in Sandwich ELISA.

Capture antibody: RCAN2 Recombinant monoclonal antibody, PBS Only (Capture) 86561-3-PBS (251381F9). 100 μ g. Concentration 1 mg/mL.

Detection antibody: RCAN2 Recombinant monoclonal antibody, PBS Only (Detector) 86561-2-PBS (251381F2). 100 μ g. Concentration 1 mg/mL.

Unconjugated rabbit recombinant monoclonal antibody pair in PBS only storage buffer at a concentration of 1 mg/mL, ready for conjugation. Created using Proteintech's proprietary in-house recombinant technology. Recombinant production enables unrivalled batch-to-batch consistency, easy scale-up, and future security of supply.

Matched antibody pairs are designed for use in a variety of assays and platforms that require matched antibody pairs.

Antibody use should be optimized for each application and assay.

Storage

Storage:
Store at -80°C.

The product is shipped with ice packs. Upon receipt, store it immediately at -80°C

Storage buffer:
PBS only

For technical support and original validation data for this product please contact:

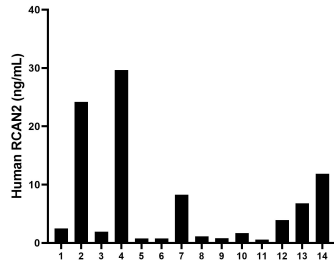
T: 4006900926

E: Proteintech-CN@ptglab.com

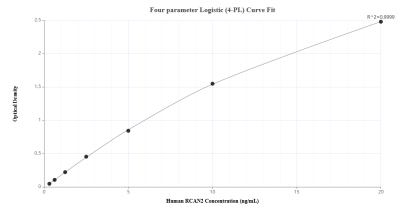
W: ptgcn.com

This product is exclusively available under Proteintech Group brand and is not available to purchase from any other manufacturer.

Selected Validation Data



Serum of fourteen individual healthy human donors was measured. The human RCAN2 concentration of detected samples was determined to be 6.78 ng/mL with a range of 0.58 - 29.64 ng/mL.



Sandwich ELISA standard curve of MP02659-1, Human RCAN2 Recombinant Matched Antibody Pair - PBS only. 86561-3-PBS was coated to a plate as the capture antibody and incubated with serial dilutions of standard Ag3597. 86561-2-PBS was HRP conjugated as the detection antibody. Range: 0.313-20 ng/mL