

For Research Use Only

IL-20RA Recombinant Matched Antibody Pair, PBS Only



Catalog Number:MP02657-1

Capture Antibody Information

Catalog Number:
86316-4-PBS
Host:
Rabbit
Isotype:
IgG
Purification Method:
Protein A purification

Clone ID:
250321C3
Reactivity:
human
GenBank:
N/A,无100%匹配
Immunogen Catalog Number:
Eg2780

Conjugate:
Unconjugated
Full name:
interleukin 20 receptor, alpha
Gene ID:
53832

Detection Antibody Information

Catalog Number:
86316-3-PBS
Host:
Rabbit
Isotype:
IgG
Purification Method:
Protein A purification

Clone ID:
250321B5
Reactivity:
human
GenBank:
N/A,无100%匹配
Immunogen Catalog Number:
Eg2780

Conjugate:
Unconjugated
Full name:
interleukin 20 receptor, alpha
Gene ID:
53832

Applications

Tested Applications:
Sandwich ELISA

Range:
62.5-4000 pg/mL (Sandwich ELISA)

Recommended Dilutions:
It is recommended that this reagent should be titrated in each testing system to obtain optimal results.

Product Information

MP02657-1 targets IL-20RA in immunoassays as a matched antibody pair. Validated in Sandwich ELISA.

Capture antibody: IL20RA Recombinant monoclonal antibody, PBS Only (Capture) 86316-4-PBS (250321C3). 100 μ g. Concentration 1 mg/mL.

Detection antibody: IL20RA Recombinant monoclonal antibody, PBS Only (Detector) 86316-3-PBS (250321B5). 100 μ g. Concentration 1 mg/mL.

Unconjugated rabbit recombinant monoclonal antibody pair in PBS only storage buffer at a concentration of 1 mg/mL, ready for conjugation. Created using Proteintech's proprietary in-house recombinant technology. Recombinant production enables unrivalled batch-to-batch consistency, easy scale-up, and future security of supply.

Matched antibody pairs are designed for use in a variety of assays and platforms that require matched antibody pairs.

Antibody use should be optimized for each application and assay.

Storage

Storage:
Store at -80°C.
The product is shipped with ice packs. Upon receipt, store it immediately at -80°C
Storage buffer:
PBS only

For technical support and original validation data for this product please contact:

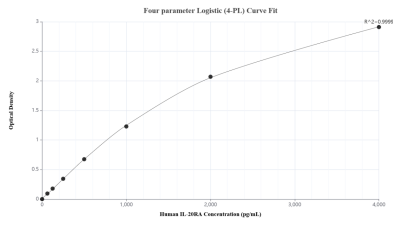
T: 4006900926

E: Proteintech-CN@ptglab.com

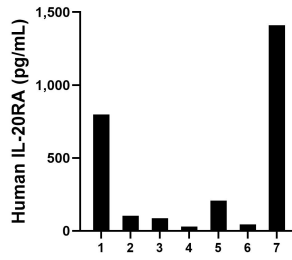
W: ptgcn.com

This product is exclusively available under Proteintech Group brand and is not available to purchase from any other manufacturer.

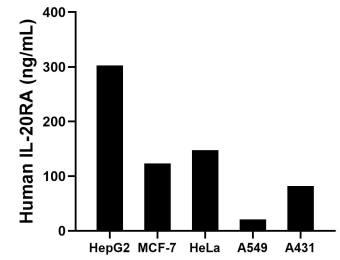
Selected Validation Data



Sandwich ELISA standard curve of MP02657-1, Human IL-20RA Recombinant Matched Antibody Pair - PBS only. 86316-4-PBS was coated to a plate as the capture antibody and incubated with serial dilutions of standard Eg2780. 86316-3-PBS was HRP conjugated as the detection antibody. Range: 62.5-4000 pg/mL



Plasma of seven individual healthy human donors was measured. The IL-20RA concentration of detected samples was determined to be 383.0 pg/mL with a range of 29.6-1,410.8 pg/mL.



The mean IL-20RA concentration was determined to be 302.5 ng/mL in HepG2 cell extract based on a 1.2 mg/mL extract load, 123.4 ng/mL in MCF-7 cell extract based on a 1.2 mg/mL extract load, 147.6 ng/mL in HeLa cell extract based on a 1.2 mg/mL extract load, 21.1 ng/mL in A549 cell extract based on a 1.1 mg/mL extract load and 81.6 ng/mL in A431 cell extract based on a 1.5 mg/mL extract load.