

For Research Use Only

SLC43A2 Recombinant Matched Antibody Pair, PBS Only



Catalog Number:MP02656-1

Capture Antibody Information

Catalog Number:
86764-2-PBS
Host:
Rabbit
Isotype:
IgG
Purification Method:
Protein A purification

Clone ID:
251699F7
Reactivity:
human
GenBank:
BC027923
Immunogen Catalog Number:
Ag31341

Conjugate:
Unconjugated
Full name:
solute carrier family 43, member 2
Gene ID:
124935

Detection Antibody Information

Catalog Number:
86764-1-PBS
Host:
Rabbit
Isotype:
IgG
Purification Method:
Protein A purification

Clone ID:
251699C4
Reactivity:
human
GenBank:
BC027923
Immunogen Catalog Number:
Ag31341

Conjugate:
Unconjugated
Full name:
solute carrier family 43, member 2
Gene ID:
124935

Applications

Tested Applications:
Cytometric bead array

Range:
0.312-40 ng/mL (Cytometric Bead Array)

Recommended Dilutions:
It is recommended that this reagent should be titrated in each testing system to obtain optimal results.

Product Information

MP02656-1 targets SLC43A2 in immunoassays as a matched antibody pair. Validated in Cytometric bead array.

Capture antibody: SLC43A2 Recombinant monoclonal antibody, PBS Only (Capture) 86764-2-PBS (251699F7). 100 μ g. Concentration 1 mg/ml.

Detection antibody: SLC43A2 Recombinant monoclonal antibody, PBS Only (Detector) 86764-1-PBS (251699C4). 100 μ g. Concentration 1 mg/ml.

Unconjugated rabbit recombinant monoclonal antibody pair in PBS only storage buffer at a concentration of 1 mg/mL, ready for conjugation. Created using Proteintech's proprietary in-house recombinant technology. Recombinant production enables unrivalled batch-to-batch consistency, easy scale-up, and future security of supply.

Matched antibody pairs are designed for use in a variety of assays and platforms that require matched antibody pairs.

Antibody use should be optimized for each application and assay.

Storage

Storage:
Store at -80°C.
The product is shipped with ice packs. Upon receipt, store it immediately at -80°C
Storage buffer:
PBS only

For technical support and original validation data for this product please contact:

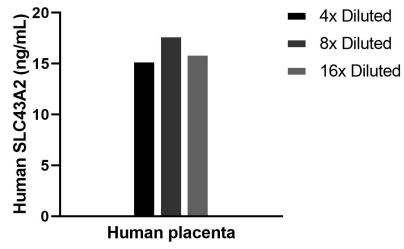
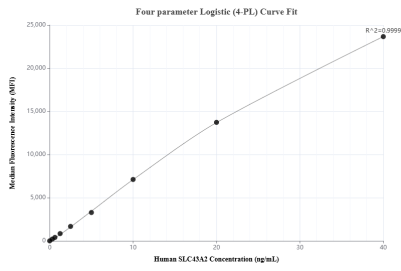
T: 4006900926

E: Proteintech-CN@ptglab.com

W: ptgcn.com

This product is exclusively available under Proteintech Group brand and is not available to purchase from any other manufacturer.

Selected Validation Data



Cytometric bead array standard curve of MP02656-1, SLC43A2 Recombinant Matched Antibody Pair, PBS Only. Capture antibody: 86764-2-PBS. Detection antibody: 86764-1-PBS. Standard: Ag31341. Range: 0.312-40 ng/mL

The mean SLC43A2 concentration was determined to be 16.4 ng/mL in Human placenta tissue extract based on a 3.2 mg/mL extract load.