

Cytokeratin 15 Recombinant Matched Antibody Pair, PBS Only

Catalog Number: **MP02654-1**

Capture Antibody Information

Catalog Number:
86761-2-PBS
Host:
Rabbit
Isotype:
IgG
Purification Method:
Protein A purification

Clone ID:
251445G5
Reactivity:
human
GenBank:
BC002641

Conjugate:
Unconjugated
Full name:
keratin 15
Gene ID:
3866

Detection Antibody Information

Catalog Number:
86761-1-PBS
Host:
Rabbit
Isotype:
IgG
Purification Method:
Protein A purification

Clone ID:
251445F2
Reactivity:
human
GenBank:
BC002641

Conjugate:
Unconjugated
Full name:
keratin 15
Gene ID:
3866

Applications

Tested Applications:
Cytometric bead array

Range:
0.234-60 ng/mL (Cytometric Bead Array)

Recommended Dilutions:
It is recommended that this reagent should be titrated in each testing system to obtain optimal results.

Product Information

MP02654-1 targets Cytokeratin 15 in immunoassays as a matched antibody pair. Validated in Cytometric bead array.

Capture antibody: KRT15 Recombinant antibody, PBS Only (Capture) 86761-2-PBS (251445G5). 100 µg. Concentration 1 mg/mL.

Detection antibody: KRT15 Recombinant antibody, PBS Only (Detector) 86761-1-PBS (251445F2). 100 µg. Concentration 1 mg/mL.

Unconjugated rabbit recombinant monoclonal antibody pair in PBS only storage buffer at a concentration of 1 mg/mL, ready for conjugation. Created using Proteintech's proprietary in-house recombinant technology. Recombinant production enables unrivalled batch-to-batch consistency, easy scale-up, and future security of supply.

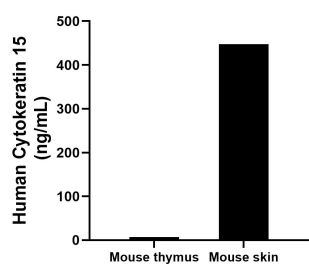
Matched antibody pairs are designed for use in a variety of assays and platforms that require matched antibody pairs.

Antibody use should be optimized for each application and assay.

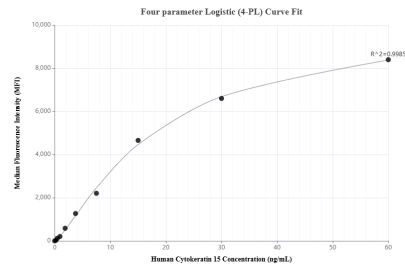
Storage

Storage:
Store at -80°C.
The product is shipped with ice packs. Upon receipt, store it immediately at -80°C
Storage buffer:
PBS only

Selected Validation Data



The mean Cytokeratin 15 concentration was determined to be 6.9 ng/mL in mouse thymus tissue extract based on a 5.8 mg/mL extract load, 447.5 ng/mL in mouse skin tissue extract based on a 0.9 mg/mL extract load.



Cytometric bead array standard curve of MP02654-1, Cytokeratin 15 Recombinant Matched Antibody Pair, PBS Only. Capture antibody: 86761-2-PBS. Detection antibody: 86761-1-PBS. Standard: SY02551. Range: 0.234-60 ng/mL.