

For Research Use Only

# Serpin A4/Kallistatin Recombinant Matched Antibody Pair, PBS Only



Catalog Number:MP02653-1

## Capture Antibody Information

**Catalog Number:**  
86758-2-PBS  
**Host:**  
Rabbit  
**Isotype:**  
IgG  
**Purification Method:**  
Protein A purification

**Clone ID:**  
251716A8  
**Reactivity:**  
human  
**GenBank:**  
NM\_001289033.1  
**Immunogen Catalog Number:**  
Eg4707

**Conjugate:**  
Unconjugated  
**Full name:**  
serpin peptidase inhibitor, clade A (alpha-1 antiproteinase, antitrypsin), member 4  
**Gene ID:**  
5267

## Detection Antibody Information

**Catalog Number:**  
86758-1-PBS  
**Host:**  
Rabbit  
**Isotype:**  
IgG  
**Purification Method:**  
Protein A purification

**Clone ID:**  
251716B4  
**Reactivity:**  
human  
**GenBank:**  
NM\_001289033.1  
**Immunogen Catalog Number:**  
Eg4707

**Conjugate:**  
Unconjugated  
**Full name:**  
serpin peptidase inhibitor, clade A (alpha-1 antiproteinase, antitrypsin), member 4  
**Gene ID:**  
5267

## Applications

**Tested Applications:**  
Cytometric bead array, Sandwich ELISA

**Range:**  
1.562-100 ng/mL (Cytometric Bead Array)  
0.156-10 ng/mL (Sandwich ELISA)

**Recommended Dilutions:**  
It is recommended that this reagent should be titrated in each testing system to obtain optimal results.

## Product Information

MP02653-1 targets Serpin A4/Kallistatin in immunoassays as a matched antibody pair. Validated in Cytometric bead array, Sandwich ELISA.

Capture antibody: Serpin A4/Kallistatin Recombinant monoclonal antibody, PBS Only (Capture) 86758-2-PBS (251716A8). 100  $\mu$ g. Concentration 1 mg/mL.

Detection antibody: Serpin A4/Kallistatin Recombinant monoclonal antibody, PBS Only (Detector) 86758-1-PBS (251716B4). 100  $\mu$ g. Concentration 1 mg/mL.

Unconjugated rabbit recombinant monoclonal antibody pair in PBS only storage buffer at a concentration of 1 mg/mL, ready for conjugation. Created using Proteintech's proprietary in-house recombinant technology. Recombinant production enables unrivalled batch-to-batch consistency, easy scale-up, and future security of supply.

Matched antibody pairs are designed for use in a variety of assays and platforms that require matched antibody pairs.

Antibody use should be optimized for each application and assay.

## Storage

**Storage:**  
Store at -80°C.  
**The product is shipped with ice packs. Upon receipt, store it immediately at -80°C**  
**Storage buffer:**  
PBS only

For technical support and original validation data for this product please contact:

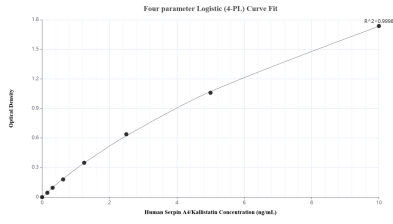
T: 4006900926

E: Proteintech-CN@ptglab.com

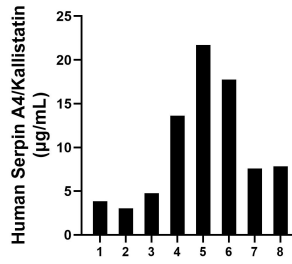
W: ptgcn.com

**This product is exclusively available under Proteintech Group brand and is not available to purchase from any other manufacturer.**

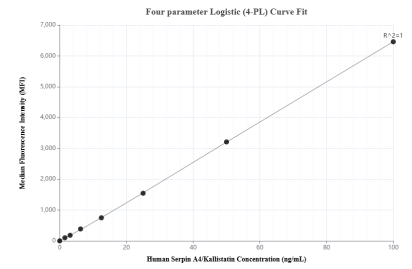
## Selected Validation Data



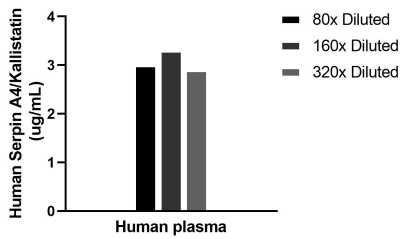
Sandwich ELISA standard curve of MP02653-1, Human Serpin A4/Kallistatin Recombinant Matched Antibody Pair - PBS only. 86758-2-PBS was coated to a plate as the capture antibody and incubated with serial dilutions of standard Eg4707. 86758-1-PBS was HRP conjugated as the detection antibody. Range: 0.156-10 ng/mL



Plasma of eight individual healthy human donors was measured. The Serpin A4/Kallistatin concentration of detected samples was determined to be 10.78 µg/mL with a range of 3.02-21.69 µg/mL.



Cytometric bead array standard curve of MP02653-1, Serpin A4/Kallistatin Recombinant Matched Antibody Pair, PBS Only. Capture antibody: 86758-2-PBS. Detection antibody: 86758-1-PBS. Standard: Eg4707. Range: 1.562-100 ng/mL



The mean Serpin A4/Kallistatin concentration was determined to be 3.0 µg/mL in human plasma.