

For Research Use Only

Mouse CCL7/MCP-3 Recombinant Matched Antibody Pair, PBS Only



Catalog Number:MP02647-1

Capture Antibody Information

Catalog Number:
86501-1-PBS
Host:
Rabbit
Isotype:
IgG
Purification Method:
Protein A purification

Clone ID:
250662A1
Reactivity:
mouse
GenBank:
NM_013654.3
Immunogen Catalog Number:
Eg4626

Conjugate:
Unconjugated
Full name:
chemokine (C-C motif) ligand 7
Gene ID:
20306

Detection Antibody Information

Catalog Number:
86501-2-PBS
Host:
Rabbit
Isotype:
IgG
Purification Method:
Protein A purification

Clone ID:
250662G6
Reactivity:
mouse
GenBank:
NM_013654.3
Immunogen Catalog Number:
Eg4626

Conjugate:
Unconjugated
Full name:
chemokine (C-C motif) ligand 7
Gene ID:
20306

Applications

Tested Applications:
Sandwich ELISA

Range:
19.5-1250 pg/mL (Sandwich ELISA)

Recommended Dilutions:
It is recommended that this reagent should be titrated in each testing system to obtain optimal results.

Product Information

MP02647-1 targets CCL7/MCP-3 in immunoassays as a matched antibody pair. Validated in Sandwich ELISA.

Capture antibody: Mouse CCL7/MCP-3 Recombinant monoclonal antibody, PBS Only (Capture) 86501-1-PBS (250662A1). 100 µg. Concentration 1 mg/mL.

Detection antibody: Mouse CCL7/MCP-3 Recombinant monoclonal antibody, PBS Only (Detector) 86501-2-PBS (250662G6). 100 µg. Concentration 1 mg/mL.

Unconjugated rabbit recombinant monoclonal antibody pair in PBS only storage buffer at a concentration of 1 mg/mL, ready for conjugation. Created using Proteintech's proprietary in-house recombinant technology. Recombinant production enables unrivalled batch-to-batch consistency, easy scale-up, and future security of supply.

Matched antibody pairs are designed for use in a variety of assays and platforms that require matched antibody pairs.

Antibody use should be optimized for each application and assay.

Storage

Storage:
Store at -80°C.
The product is shipped with ice packs. Upon receipt, store it immediately at -80°C
Storage buffer:
PBS only

For technical support and original validation data for this product please contact:

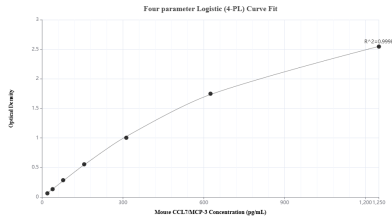
T: 4006900926

E: Proteintech-CN@ptglab.com

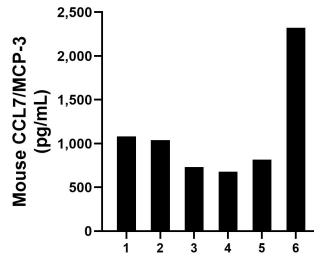
W: ptgcn.com

This product is exclusively available under Proteintech Group brand and is not available to purchase from any other manufacturer.

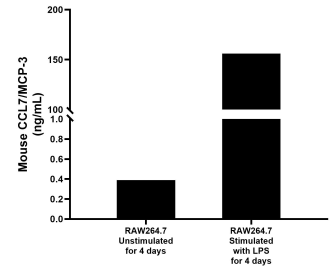
Selected Validation Data



Sandwich ELISA standard curve of MP02647-1, Mouse CCL7/MCP-3 Recombinant Matched Antibody Pair - PBS only. 86501-1-PBS was coated to a plate as the capture antibody and incubated with serial dilutions of standard Eg4626. 86501-2-PBS was HRP conjugated as the detection antibody. Range: 19.5-1250 pg/mL



Serum of six mice was measured. The mouse CCL7/MCP-3 concentration of detected samples was determined to be 1,111.5 pg/mL with a range of 678.1-2,323.1 pg/mL.



RAW264.7 cells were cultured unstimulated or stimulated with 1 μ g/mL LPS for 4 days. The mean CCL7/MCP-3 concentration was determined to be 0.39 ng/mL in unstimulated supernatant, 155.99 ng/mL in LPS stimulated supernatant.