

For Research Use Only

Rat Serpin E1/PAI-1 Recombinant Matched Antibody Pair, PBS Only



Catalog Number:MP02642-1

Capture Antibody Information

Catalog Number:
86765-2-PBS
Host:
Rabbit
Isotype:
IgG
Purification Method:
Protein A purification

Clone ID:
250718A10
Reactivity:
rat
GenBank:
NM_012620.1
Immunogen Catalog Number:
Eg3256

Conjugate:
Unconjugated
Full name:
serine (or cysteine) peptidase inhibitor, clade E, member 1
Gene ID:
24617

Detection Antibody Information

Catalog Number:
86765-1-PBS
Host:
Rabbit
Isotype:
IgG
Purification Method:
Protein A purification

Clone ID:
250718F11
Reactivity:
rat
GenBank:
NM_012620.1
Immunogen Catalog Number:
Eg3256

Conjugate:
Unconjugated
Full name:
serine (or cysteine) peptidase inhibitor, clade E, member 1
Gene ID:
24617

Applications

Tested Applications:
Sandwich ELISA

Range:
78.1-2500 pg/mL (Sandwich ELISA)

Recommended Dilutions:
It is recommended that this reagent should be titrated in each testing system to obtain optimal results.

Product Information

MP02642-1 targets Serpin E1/PAI-1 in immunoassays as a matched antibody pair. Validated in Sandwich ELISA.

Capture antibody: Rat PAI-1/Serpin E1 Recombinant monoclonal antibody, PBS Only (Capture) 86765-2-PBS (250718A10). 100 µg. Concentration 1 mg/mL.

Detection antibody: Rat PAI-1/Serpin E1 Recombinant monoclonal antibody, PBS Only (Detector) 86765-1-PBS (250718F11). 100 µg. Concentration 1 mg/mL.

Unconjugated rabbit recombinant monoclonal antibody pair in PBS only storage buffer at a concentration of 1 mg/mL, ready for conjugation. Created using Proteintech's proprietary in-house recombinant technology. Recombinant production enables unrivalled batch-to-batch consistency, easy scale-up, and future security of supply.

Matched antibody pairs are designed for use in a variety of assays and platforms that require matched antibody pairs.

Antibody use should be optimized for each application and assay.

Storage

Storage:
Store at -80°C.
The product is shipped with ice packs. Upon receipt, store it immediately at -80°C
Storage buffer:
PBS only

For technical support and original validation data for this product please contact:

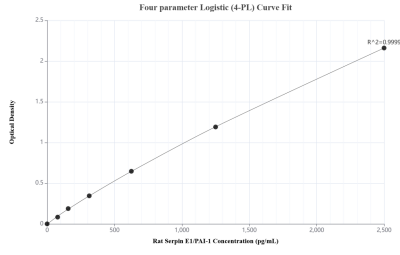
T: 4006900926

E: Proteintech-CN@ptglab.com

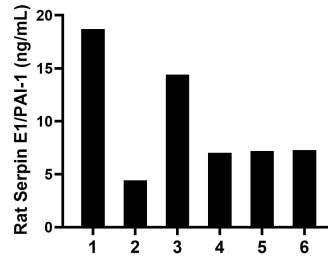
W: ptgcn.com

This product is exclusively available under Proteintech Group brand and is not available to purchase from any other manufacturer.

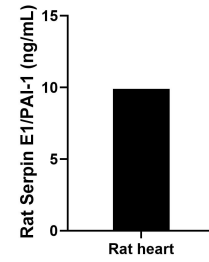
Selected Validation Data



Sandwich ELISA standard curve of MP02642-1, Rat Serpin E1/PAI-1 Recombinant Matched Antibody Pair - PBS only. 86765-2-PBS was coated to a plate as the capture antibody and incubated with serial dilutions of standard Eg3256. 86765-1-PBS was HRP conjugated as the detection antibody. Range: 78.1-2500 pg/mL



Serum of six rats was measured. The Serpin E1/PAI-1 concentration of detected samples was determined to be 9.84 ng/mL with a range of 4.42-18.71 ng/mL



The mean Serpin E1/PAI-1 concentration was determined to be 9.90 ng/mL in rat heart extract based on a 6.70 mg/mL extract load.