

For Research Use Only

KLK11 Recombinant Matched Antibody Pair, PBS Only



Catalog Number:MP02641-1

Capture Antibody Information

Catalog Number:
86517-3-PBS
Host:
Rabbit
Isotype:
IgG
Purification Method:
Protein A purification

Clone ID:
251323C9
Reactivity:
human
GenBank:
NM_144947.2
Immunogen Catalog Number:
Eg2890

Conjugate:
Unconjugated
Full name:
kallikrein-related peptidase 11
Gene ID:
11012

Detection Antibody Information

Catalog Number:
86517-2-PBS
Host:
Rabbit
Isotype:
IgG
Purification Method:
Protein A purification

Clone ID:
251323E5
Reactivity:
human
GenBank:
NM_144947.2
Immunogen Catalog Number:
Eg2890

Conjugate:
Unconjugated
Full name:
kallikrein-related peptidase 11
Gene ID:
11012

Applications

Tested Applications:
Sandwich ELISA

Range:
78.1-5000 pg/mL (Sandwich ELISA)

Recommended Dilutions:
It is recommended that this reagent should be titrated in each testing system to obtain optimal results.

Product Information

MP02641-1 targets KLK11 in immunoassays as a matched antibody pair. Validated in Sandwich ELISA.

Capture antibody: KLK11 Recombinant monoclonal antibody, PBS Only (Capture) 86517-3-PBS (251323C9). 100 µg. Concentration 1 mg/mL.

Detection antibody: KLK11 Recombinant monoclonal antibody, PBS Only (Detector) 86517-2-PBS (251323E5). 100 µg. Concentration 1 mg/mL.

Unconjugated rabbit recombinant monoclonal antibody pair in PBS only storage buffer at a concentration of 1 mg/mL, ready for conjugation. Created using Proteintech's proprietary in-house recombinant technology. Recombinant production enables unrivalled batch-to-batch consistency, easy scale-up, and future security of supply.

Matched antibody pairs are designed for use in a variety of assays and platforms that require matched antibody pairs.

Antibody use should be optimized for each application and assay.

Storage

Storage:
Store at -80°C.
The product is shipped with ice packs. Upon receipt, store it immediately at -80°C
Storage buffer:
PBS only

For technical support and original validation data for this product please contact:

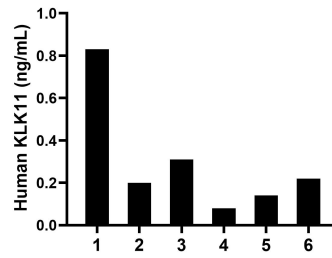
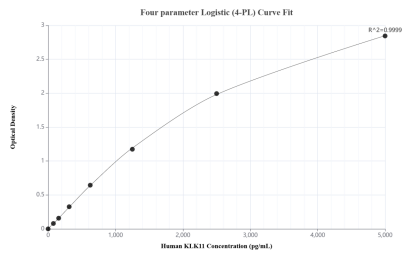
T: 4006900926

E: Proteintech-CN@ptglab.com

W: ptgcn.com

This product is exclusively available under Proteintech Group brand and is not available to purchase from any other manufacturer.

Selected Validation Data



Sandwich ELISA standard curve of MP02641-1, Human KLK11 Recombinant Matched Antibody Pair - PBS only. 86517-3-PBS was coated to a plate as the capture antibody and incubated with serial dilutions of standard Eg2890. 86517-2-PBS was HRP conjugated as the detection antibody. Range: 78.1-5000 pg/mL

Plasma of six individual healthy human donors was measured. The KLK11 concentration of detected samples was determined to be 0.30 ng/mL with a range of 0.14-0.83 ng/mL.