

For Research Use Only



# TMEM35 Recombinant Matched Antibody Pair, PBS Only

Catalog Number:MP02630-1

## Capture Antibody Information

Catalog Number:

86724-3-PBS

Host:

Rabbit

Isotype:

IgG

Purification Method:

Protein A purification

Clone ID:

251680A7

Reactivity:

human

GenBank:

BC078658

Immunogen Catalog Number:

Ag20589

Conjugate:

Unconjugated

Full name:

transmembrane protein 35

Gene ID:

59353

## Detection Antibody Information

Catalog Number:

86724-2-PBS

Host:

Rabbit

Isotype:

IgG

Purification Method:

Protein A purification

Clone ID:

251680D9

Reactivity:

human

GenBank:

BC078658

Immunogen Catalog Number:

Ag20589

Conjugate:

Unconjugated

Full name:

transmembrane protein 35

Gene ID:

59353

## Applications

Tested Applications:

Cytometric bead array

Range:

0.469-60 ng/mL (Cytometric Bead Array)

Recommended Dilutions:

It is recommended that this reagent should be titrated in each testing system to obtain optimal results.

## Product Information

MP02630-1 targets TMEM35 in immunoassays as a matched antibody pair. Validated in Cytometric bead array.

Capture antibody: TMEM35 Recombinant monoclonal antibody, PBS Only (Capture) 86724-3-PBS (251680A7). 100  $\mu$ g. Concentration 1 mg/mL.

Detection antibody: TMEM35 Recombinant monoclonal antibody, PBS Only (Detector) 86724-2-PBS (251680D9). 100  $\mu$ g. Concentration 1 mg/mL.

Unconjugated rabbit recombinant monoclonal antibody pair in PBS only storage buffer at a concentration of 1 mg/mL, ready for conjugation. Created using Proteintech's proprietary in-house recombinant technology. Recombinant production enables unrivalled batch-to-batch consistency, easy scale-up, and future security of supply.

Matched antibody pairs are designed for use in a variety of assays and platforms that require matched antibody pairs.

Antibody use should be optimized for each application and assay.

## Storage

Storage:

Store at -80°C.

The product is shipped with ice packs. Upon receipt, store it immediately at -80°C

Storage buffer:

PBS only

For technical support and original validation data for this product please contact:

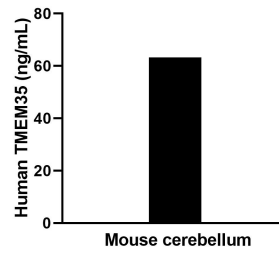
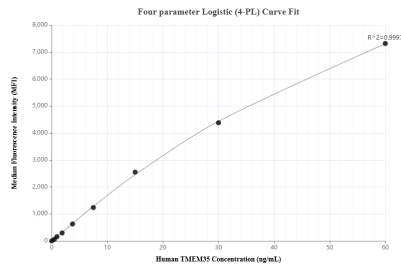
T: 4006900926

E: Proteintech-CN@ptglab.com

W: ptgcn.com

This product is exclusively available under Proteintech Group brand and is not available to purchase from any other manufacturer.

## Selected Validation Data



Cytometric bead array standard curve of MPO2630-1, TMEM35 Recombinant Matched Antibody Pair, PBS Only. Capture antibody: 86724-3-PBS. Detection antibody: 86724-2-PBS. Standard: Ag20589. Range: 0.469-60 ng/mL.

The mean TMEM35 concentration was determined to be 64.1 ng/mL in Mouse cerebellum tissue extract based on a 6.0 mg/mL extract load.