

For Research Use Only

PHPT1 Recombinant Matched Antibody Pair, PBS Only



Catalog Number:MP02628-1

Capture Antibody Information

Catalog Number:
86736-2-PBS

Host:
Rabbit

Isotype:
IgG

Purification Method:
Protein A purification

Clone ID:
251432F11

Reactivity:
human

GenBank:
BC024648

Immunogen Catalog Number:
Ag3778

Conjugate:
Unconjugated

Full name:
phosphohistidine phosphatase 1

Gene ID:
29085

Detection Antibody Information

Catalog Number:
86736-1-PBS

Host:
Rabbit

Isotype:
IgG

Purification Method:
Protein A purification

Clone ID:
251432A2

Reactivity:
human

GenBank:
BC024648

Immunogen Catalog Number:
Ag3778

Conjugate:
Unconjugated

Full name:
phosphohistidine phosphatase 1

Gene ID:
29085

Applications

Tested Applications:
Cytometric bead array

Range:
0.312-20 ng/mL (Cytometric Bead Array)

Recommended Dilutions:
It is recommended that this reagent should be titrated in each testing system to obtain optimal results.

Product Information

MP02628-1 targets PHPT1 in immunoassays as a matched antibody pair. Validated in Cytometric bead array.

Capture antibody: PHPT1 Recombinant monoclonal antibody, PBS Only (Capture) 86736-2-PBS (251432F11). 100 μ g. Concentration 1 mg/ml.

Detection antibody: PHPT1 Recombinant monoclonal antibody, PBS Only (Detector) 86736-1-PBS (251432A2). 100 μ g. Concentration 1 mg/ml.

Unconjugated rabbit recombinant monoclonal antibody pair in PBS only storage buffer at a concentration of 1 mg/mL, ready for conjugation. Created using Proteintech's proprietary in-house recombinant technology. Recombinant production enables unrivalled batch-to-batch consistency, easy scale-up, and future security of supply.

Matched antibody pairs are designed for use in a variety of assays and platforms that require matched antibody pairs.

Antibody use should be optimized for each application and assay.

Storage

Storage:

Store at -80°C.

The product is shipped with ice packs. Upon receipt, store it immediately at -80°C

Storage buffer:

PBS only

For technical support and original validation data for this product please contact:

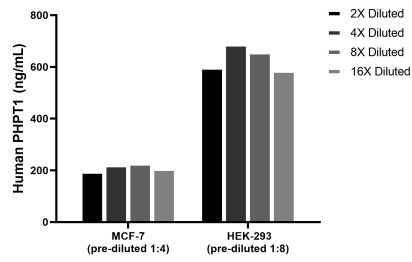
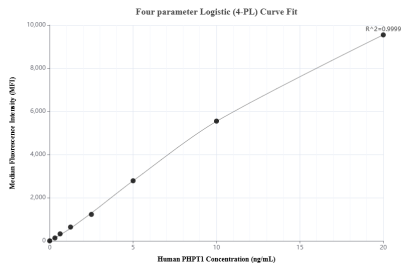
T: 4006900926

E: Proteintech-CN@ptglab.com

W: ptgcn.com

This product is exclusively available under Proteintech Group brand and is not available to purchase from any other manufacturer.

Selected Validation Data



Cytometric bead array standard curve of MPO2628-1, PHPT1 Recombinant Matched Antibody Pair, PBS Only. Capture antibody: 86736-2-PBS. Detection antibody: 86736-1-PBS. Standard: Ag3778. Range: 0.312-20 ng/mL

The mean PHPT1 concentration was determined to be 211.8 ng/mL in MCF-7 cell extract based on a 1.2 mg/mL extract load, 631.7 ng/mL in HEK-293 cell extract based on a 1.2 mg/mL extract load.