

For Research Use Only



# KDM5C Recombinant Matched Antibody Pair, PBS Only

Catalog Number:MP02624-1

## Capture Antibody Information

Catalog Number:

86017-3-PBS

Host:

Rabbit

Isotype:

IgG

Purification Method:

Protein A purification

Clone ID:

250484E10

Reactivity:

human

GenBank:

BC054499

Immunogen Catalog Number:

Ag5791

Conjugate:

Unconjugated

Full name:

lysine (K)-specific demethylase 5C

Gene ID:

8242

## Detection Antibody Information

Catalog Number:

86017-2-PBS

Host:

Rabbit

Isotype:

IgG

Purification Method:

Protein A purification

Clone ID:

250484D1

Reactivity:

human

GenBank:

BC054499

Immunogen Catalog Number:

Ag5791

Conjugate:

Unconjugated

Full name:

lysine (K)-specific demethylase 5C

Gene ID:

8242

## Applications

Tested Applications:

Sandwich ELISA

Range:

0.156-10 ng/mL (Sandwich ELISA)

Recommended Dilutions:

It is recommended that this reagent should be titrated in each testing system to obtain optimal results.

## Product Information

MP02624-1 targets KDM5C in immunoassays as a matched antibody pair. Validated in Sandwich ELISA.

Capture antibody: KDM5C Recombinant monoclonal antibody, PBS Only (Capture) 86017-3-PBS (250484E10). 100  $\mu$ g. Concentration 1 mg/mL.

Detection antibody: KDM5C Recombinant monoclonal antibody, PBS Only (Detector) 86017-2-PBS (250484D1). 100  $\mu$ g. Concentration 1 mg/mL.

Unconjugated rabbit recombinant monoclonal antibody pair in PBS only storage buffer at a concentration of 1 mg/mL, ready for conjugation. Created using Proteintech's proprietary in-house recombinant technology. Recombinant production enables unrivalled batch-to-batch consistency, easy scale-up, and future security of supply.

Matched antibody pairs are designed for use in a variety of assays and platforms that require matched antibody pairs.

Antibody use should be optimized for each application and assay.

## Storage

Storage:

Store at -80°C.

The product is shipped with ice packs. Upon receipt, store it immediately at -80°C

Storage buffer:

PBS only

For technical support and original validation data for this product please contact:

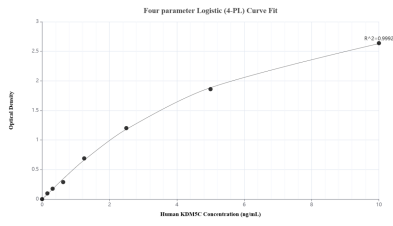
T: 4006900926

E: Proteintech-CN@ptglab.com

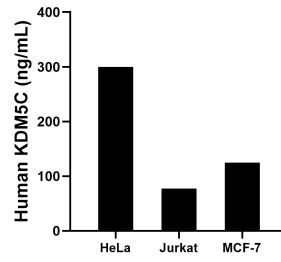
W: ptgcn.com

This product is exclusively available under Proteintech Group brand and is not available to purchase from any other manufacturer.

## Selected Validation Data



Sandwich ELISA standard curve of MP02624-1, Human KDM5C Recombinant Matched Antibody Pair - PBS only. 86017-3-PBS was coated to a plate as the capture antibody and incubated with serial dilutions of standard Ag5791. 86017-2-PBS was HRP conjugated as the detection antibody. Range: 0.156-10 ng/mL.



The mean KDM5C concentration was determined to be 299.61 ng/mL in HeLa cell extract based on a 1.10 mg/mL extract load, 77.16 ng/mL in Jurkat cell extract based on a 1.20 mg/mL extract load and 124.98 ng/mL in MCF-7 cell extract based on a 1.30 mg/mL extract load.