

GRP75 Recombinant Matched Antibody Pair, PBS Only

Catalog Number: **MP02623-1**

Capture Antibody Information

Catalog Number: 86721-3-PBS	Clone ID: 251670C11	Conjugate: Unconjugated
Host: Rabbit	Reactivity: human	Full name: heat shock 70kDa protein 9 (mortalin)
Isotype: IgG	GenBank: BC000478	Gene ID: 3313
Purification Method: Protein A purification	Immunogen Catalog Number: Ag6673	

Detection Antibody Information

Catalog Number: 86721-2-PBS	Clone ID: 251670F7	Conjugate: Unconjugated
Host: Rabbit	Reactivity: human	Full name: heat shock 70kDa protein 9 (mortalin)
Isotype: IgG	GenBank: BC000478	Gene ID: 3313
Purification Method: Protein A purification	Immunogen Catalog Number: Ag6673	

Applications

Tested Applications: Cytometric bead array	Range: 0.312-40 ng/mL (Cytometric Bead Array)	Recommended Dilutions: It is recommended that this reagent should be titrated in each testing system to obtain optimal results.
--	---	---

Product Information

MP02623-1 targets GRP75 in immunoassays as a matched antibody pair. Validated in Cytometric bead array.

Capture antibody: GRP75 Recombinant antibody, PBS Only (Capture) 86721-3-PBS (251670C11). 100 µg. Concentration 1 mg/mL.

Detection antibody: GRP75 Recombinant antibody, PBS Only (Detector) 86721-2-PBS (251670F7). 100 µg. Concentration 1 mg/mL.

Unconjugated rabbit recombinant monoclonal antibody pair in PBS only storage buffer at a concentration of 1 mg/mL, ready for conjugation. Created using Proteintech's proprietary in-house recombinant technology. Recombinant production enables unrivalled batch-to-batch consistency, easy scale-up, and future security of supply.

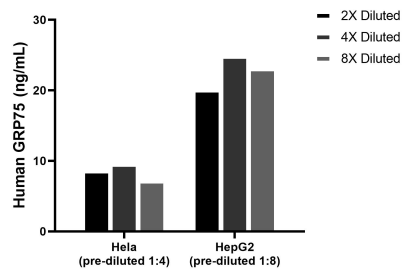
Matched antibody pairs are designed for use in a variety of assays and platforms that require matched antibody pairs.

Antibody use should be optimized for each application and assay.

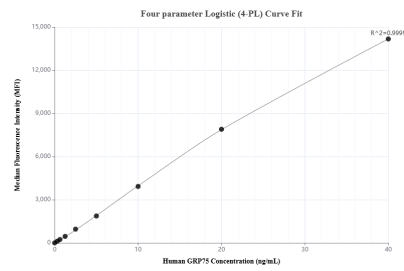
Storage

Storage:
Store at -80°C.
The product is shipped with ice packs. Upon receipt, store it immediately at -80°C
Storage buffer:
PBS only

Selected Validation Data



The mean GRP75 concentration was determined to be 8.4 ng/mL in Hela cell extract based on a 1.2 mg/mL extract load, 22.6 ng/mL in HepG2 cell extract based on a 1.2 mg/mL extract load.



Cytometric bead array standard curve of MP02623-1, GRP75 Recombinant Matched Antibody Pair, PBS Only. Capture antibody: 86721-3-PBS. Detection antibody: 86721-2-PBS. Standard: Ag6673. Range: 0.312-40 ng/mL.