

APEX1 Recombinant Matched Antibody Pair, PBS Only

Catalog Number: **MP02621-2**

Capture Antibody Information

Catalog Number:
86719-3-PBS
Host:
Rabbit
Isotype:
IgG
Purification Method:
Protein A purification

Clone ID:
251693B6
Reactivity:
human
GenBank:
BC002338
Immunogen Catalog Number:
Ag0251

Conjugate:
Unconjugated
Full name:
APEX nuclease (multifunctional DNA repair enzyme) 1
Gene ID:
328

Detection Antibody Information

Catalog Number:
86719-1-PBS
Host:
Rabbit
Isotype:
IgG
Purification Method:
Protein A purification

Clone ID:
251693G12
Reactivity:
human
GenBank:
BC002338
Immunogen Catalog Number:
Ag0251

Conjugate:
Unconjugated
Full name:
APEX nuclease (multifunctional DNA repair enzyme) 1
Gene ID:
328

Applications

Tested Applications:
Sandwich ELISA

Range:
0.156–10 ng/mL (Sandwich ELISA)

Recommended Dilutions:
It is recommended that this reagent should be titrated in each testing system to obtain optimal results.

Product Information

MP02621-2 targets APEX1 in immunoassays as a matched antibody pair. Validated in Sandwich ELISA.

Capture antibody: APEX1 Recombinant monoclonal antibody, PBS Only (Capture) 86719-3-PBS (251693B6). 100 µg. Concentration 1 mg/mL.

Detection antibody: APEX1 Recombinant monoclonal antibody, PBS Only (Detector) 86719-1-PBS (251693G12). 100 µg. Concentration 1 mg/mL.

Unconjugated rabbit recombinant monoclonal antibody pair in PBS only storage buffer at a concentration of 1 mg/mL, ready for conjugation. Created using Proteintech's proprietary in-house recombinant technology. Recombinant production enables unrivalled batch-to-batch consistency, easy scale-up, and future security of supply.

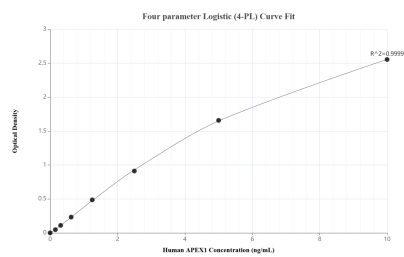
Matched antibody pairs are designed for use in a variety of assays and platforms that require matched antibody pairs.

Antibody use should be optimized for each application and assay.

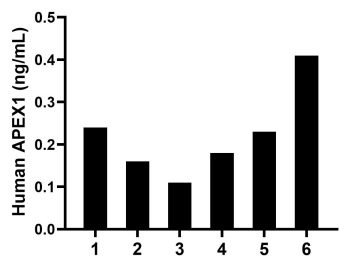
Storage

Storage:
Store at -80°C.
The product is shipped with ice packs. Upon receipt, store it immediately at -80°C
Storage buffer:
PBS only

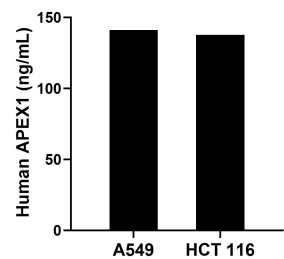
Selected Validation Data



Sandwich ELISA standard curve of MP02621-2, Human APEX1 Recombinant Matched Antibody Pair - PBS only. 86719-3-PBS was coated to a plate as the capture antibody and incubated with serial dilutions of standard Ag0251. 86719-1-PBS was HRP conjugated as the detection antibody. Range: 0.156-10 ng/mL.



Plasma of six individual healthy human donors was measured. The APEX1 concentration of detected samples was determined to be 0.22 ng/mL with a range of 0.11-0.41 ng/mL.



The mean APEX1 concentration was determined to be 141.21 ng/mL in A549 cell extract based on a 1.20 mg/mL extract load and 137.64 ng/mL in HCT 116 cell extract based on a 1.30 mg/mL extract load.