

APEX1 Recombinant Matched Antibody Pair, PBS Only

Catalog Number: **MP02621-1**

Capture Antibody Information

Catalog Number:
86719-3-PBS
Host:
Rabbit
Isotype:
IgG
Purification Method:
Protein A purification

Clone ID:
251693B6
Reactivity:
human
GenBank:
BC002338
Immunogen Catalog Number:
Ag0251

Conjugate:
Unconjugated
Full name:
APEX nuclease (multifunctional DNA repair enzyme) 1
Gene ID:
328

Detection Antibody Information

Catalog Number:
86719-2-PBS
Host:
Rabbit
Isotype:
IgG
Purification Method:
Protein A purification

Clone ID:
251693A3
Reactivity:
human
GenBank:
BC002338
Immunogen Catalog Number:
Ag0251

Conjugate:
Unconjugated
Full name:
APEX nuclease (multifunctional DNA repair enzyme) 1
Gene ID:
328

Applications

Tested Applications:
Cytometric bead array

Range:
0.312-40 ng/mL (Cytometric Bead Array)

Recommended Dilutions:
It is recommended that this reagent should be titrated in each testing system to obtain optimal results.

Product Information

MP02621-1 targets APEX1 in immunoassays as a matched antibody pair. Validated in Cytometric bead array.

Capture antibody: APEX1 Recombinant monoclonal antibody, PBS Only (Capture) 86719-3-PBS (251693B6). 100 µg. Concentration 1 mg/mL.

Detection antibody: APEX1 Recombinant monoclonal antibody, PBS Only (Detector) 86719-2-PBS (251693A3). 100 µg. Concentration 1 mg/mL.

Unconjugated rabbit recombinant monoclonal antibody pair in PBS only storage buffer at a concentration of 1 mg/mL, ready for conjugation. Created using Proteintech's proprietary in-house recombinant technology. Recombinant production enables unrivalled batch-to-batch consistency, easy scale-up, and future security of supply.

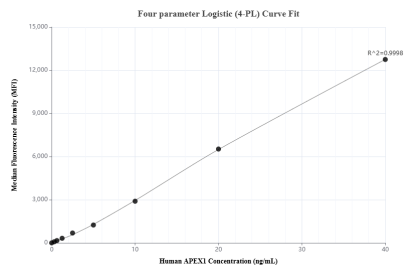
Matched antibody pairs are designed for use in a variety of assays and platforms that require matched antibody pairs.

Antibody use should be optimized for each application and assay.

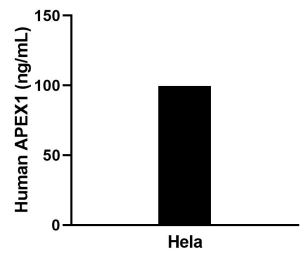
Storage

Storage:
Store at -80°C.
The product is shipped with ice packs. Upon receipt, store it immediately at -80°C
Storage buffer:
PBS only

Selected Validation Data



Cytometric bead array standard curve of MP02621-1, APEX1 Recombinant Matched Antibody Pair, PBS Only. Capture antibody: 86719-3-PBS. Detection antibody: 86719-2-PBS. Standard: Ag0251. Range: 0.312-40 ng/mL



The mean APEX1 concentration was determined to be 101.1 ng/mL in HeLa cell extract based on a 1.2 mg/mL extract load.