

For Research Use Only

# CCDC99 Recombinant Matched Antibody Pair, PBS Only



Catalog Number:MP02617-1

## Capture Antibody Information

Catalog Number:  
86746-3-PBS

Host:  
Rabbit

Isotype:  
IgG

Purification Method:  
Protein A purification

Clone ID:  
251474C2

Reactivity:  
human

GenBank:  
BC012568

Immunogen Catalog Number:  
Ag20430

Conjugate:  
Unconjugated

Full name:  
coiled-coil domain containing 99

Gene ID:  
54908

## Detection Antibody Information

Catalog Number:  
86746-2-PBS

Host:  
Rabbit

Isotype:  
IgG

Purification Method:  
Protein A purification

Clone ID:  
251474A9

Reactivity:  
human

GenBank:  
BC012568

Immunogen Catalog Number:  
Ag20430

Conjugate:  
Unconjugated

Full name:  
coiled-coil domain containing 99

Gene ID:  
54908

## Applications

Tested Applications:  
Cytometric bead array

Range:  
0.312-40 ng/mL (Cytometric Bead Array)

Recommended Dilutions:  
It is recommended that this reagent should be titrated in each testing system to obtain optimal results.

## Product Information

MP02617-1 targets CCDC99 in immunoassays as a matched antibody pair. Validated in Cytometric bead array.

Capture antibody: CCDC99 Recombinant monoclonal antibody, PBS Only (Capture) 86746-3-PBS (251474C2). 100  $\mu$ g. Concentration 1 mg/ml.

Detection antibody: CCDC99 Recombinant monoclonal antibody, PBS Only (Detector) 86746-2-PBS (251474A9). 100  $\mu$ g. Concentration 1 mg/ml.

Unconjugated rabbit recombinant monoclonal antibody pair in PBS only storage buffer at a concentration of 1 mg/mL, ready for conjugation. Created using Proteintech's proprietary in-house recombinant technology. Recombinant production enables unrivalled batch-to-batch consistency, easy scale-up, and future security of supply.

Matched antibody pairs are designed for use in a variety of assays and platforms that require matched antibody pairs.

Antibody use should be optimized for each application and assay.

## Storage

Storage:  
Store at -80°C.

The product is shipped with ice packs. Upon receipt, store it immediately at -80°C

Storage buffer:  
PBS only

For technical support and original validation data for this product please contact:

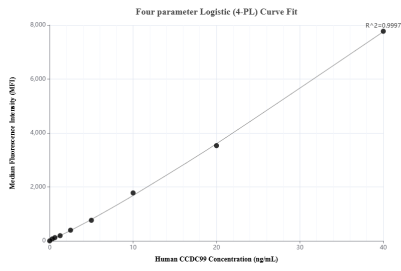
T: 4006900926

E: Proteintech-CN@ptglab.com

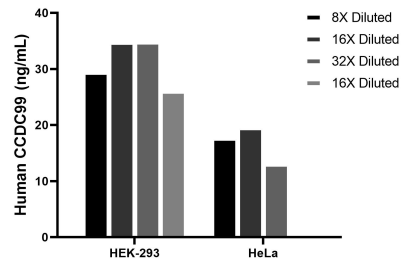
W: ptgcn.com

This product is exclusively available under Proteintech Group brand and is not available to purchase from any other manufacturer.

## Selected Validation Data



Cytometric bead array standard curve of MP02617-1, CCDC99 Recombinant Matched Antibody Pair, PBS Only. Capture antibody: 86746-3-PBS. Detection antibody: 86746-2-PBS. Standard: Ag20430. Range: 0.312-40 ng/mL.



The mean CCDC99 concentration was determined to be 31.2 ng/mL in HEK-293 cell extract based on a 1.2 mg/mL extract load, 18.6 ng/mL in HeLa cell extract based on a 1.2 mg/mL extract load.