

For Research Use Only



# IL-32 Recombinant Matched Antibody Pair, PBS Only

Catalog Number:MP02615-1

## Capture Antibody Information

**Catalog Number:**  
86678-2-PBS  
**Host:**  
Rabbit  
**Isotype:**  
IgG  
**Purification Method:**  
Protein A purification

**Clone ID:**  
250373D3  
**Reactivity:**  
human  
**GenBank:**  
NM\_001012633.1  
**Immunogen Catalog Number:**  
Eg3224

**Conjugate:**  
Unconjugated  
**Full name:**  
interleukin 32  
**Gene ID:**  
9235

## Detection Antibody Information

**Catalog Number:**  
86678-1-PBS  
**Host:**  
Rabbit  
**Isotype:**  
IgG  
**Purification Method:**  
Protein A purification

**Clone ID:**  
250373F3  
**Reactivity:**  
human  
**GenBank:**  
NM\_001012633.1  
**Immunogen Catalog Number:**  
Eg3224

**Conjugate:**  
Unconjugated  
**Full name:**  
interleukin 32  
**Gene ID:**  
9235

## Applications

**Tested Applications:**  
Sandwich ELISA

**Range:**  
0.156-10 ng/mL (Sandwich ELISA)

**Recommended Dilutions:**  
It is recommended that this reagent should be titrated in each testing system to obtain optimal results.

## Product Information

MP02615-1 targets IL-32 in immunoassays as a matched antibody pair. Validated in Sandwich ELISA.

Capture antibody: IL32 Recombinant antibody, PBS Only (Capture) 86678-2-PBS (250373D3). 100 µg. Concentration 1 mg/mL.

Detection antibody: IL32 Recombinant antibody, PBS Only (Detector) 86678-1-PBS (250373F3). 100 µg. Concentration 1 mg/mL.

Unconjugated rabbit recombinant monoclonal antibody pair in PBS only storage buffer at a concentration of 1 mg/mL, ready for conjugation. Created using Proteintech's proprietary in-house recombinant technology. Recombinant production enables unrivalled batch-to-batch consistency, easy scale-up, and future security of supply.

Matched antibody pairs are designed for use in a variety of assays and platforms that require matched antibody pairs.

Antibody use should be optimized for each application and assay.

## Storage

**Storage:**  
Store at -80°C.  
**The product is shipped with ice packs. Upon receipt, store it immediately at -80°C**  
**Storage buffer:**  
PBS only

For technical support and original validation data for this product please contact:

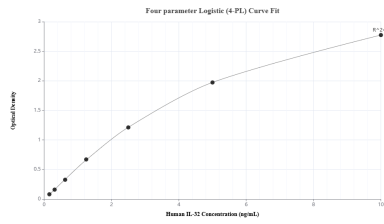
T: 4006900926

E: Proteintech-CN@ptglab.com

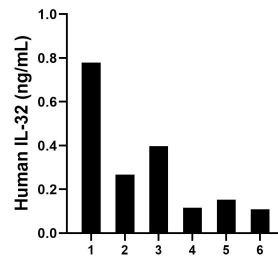
W: ptgcn.com

**This product is exclusively available under Proteintech Group brand and is not available to purchase from any other manufacturer.**

## Selected Validation Data



Sandwich ELISA standard curve of MP02615-1, Human IL-32 Recombinant Matched Antibody Pair - PBS only. 86678-2-PBS was coated to a plate as the capture antibody and incubated with serial dilutions of standard Eg3224. 86678-1-PBS was HRP conjugated as the detection antibody. Range: 0.156-10 ng/mL



Plasma of six individual healthy human donors was measured. The human IL-32 concentration of detected samples was determined to be 0.30 ng/mL with a range of 0.11 - 0.78 ng/mL