

GSTP1 Recombinant Matched Antibody Pair, PBS Only

Catalog Number: **MP02614-1**

Capture Antibody Information

Catalog Number:
86708-3-PBS
Host:
Rabbit
Isotype:
IgG
Purification Method:
Protein A purification

Clone ID:
251705C7
Reactivity:
human
GenBank:
BC010915
Immunogen Catalog Number:
Ag8731

Conjugate:
Unconjugated
Full name:
glutathione S-transferase pi 1
Gene ID:
2950

Detection Antibody Information

Catalog Number:
86708-2-PBS
Host:
Rabbit
Isotype:
IgG
Purification Method:
Protein A purification

Clone ID:
251705G6
Reactivity:
human
GenBank:
BC010915
Immunogen Catalog Number:
Ag8731

Conjugate:
Unconjugated
Full name:
glutathione S-transferase pi 1
Gene ID:
2950

Applications

Tested Applications:
Cytometric bead array, Sandwich
ELISA

Range:
0.156-20 ng/mL (Cytometric Bead
Array)
39.1-2500 pg/mL (Sandwich ELISA)

Recommended Dilutions:
It is recommended that this reagent
should be titrated in each testing
system to obtain optimal results.

Product Information

MP02614-1 targets GSTP1 in immunoassays as a matched antibody pair. Validated in Cytometric bead array, Sandwich ELISA.

Capture antibody: GSTP1 Recombinant monoclonal antibody, PBS Only (Capture) 86708-3-PBS (251705C7). 100 µg. Concentration 1 mg/mL.

Detection antibody: GSTP1 Recombinant monoclonal antibody, PBS Only (Detector) 86708-2-PBS (251705G6). 100 µg. Concentration 1 mg/mL.

Unconjugated rabbit recombinant monoclonal antibody pair in PBS only storage buffer at a concentration of 1 mg/mL, ready for conjugation. Created using Proteintech's proprietary in-house recombinant technology. Recombinant production enables unrivalled batch-to-batch consistency, easy scale-up, and future security of supply.

Matched antibody pairs are designed for use in a variety of assays and platforms that require matched antibody pairs.

Antibody use should be optimized for each application and assay.

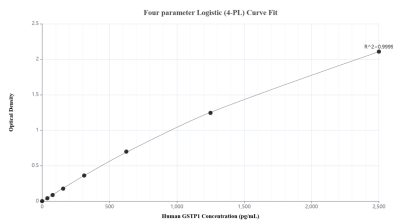
Storage

Storage:
Store at -80°C.

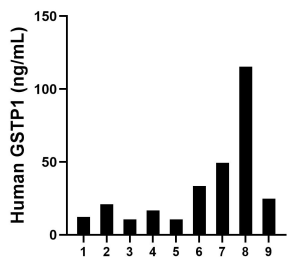
The product is shipped with ice packs. Upon receipt, store it immediately at -80°C

Storage buffer:
PBS only

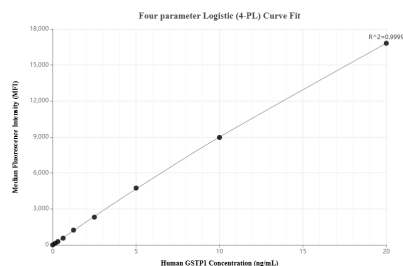
Selected Validation Data



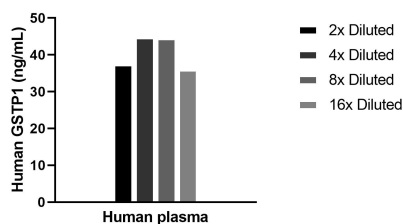
Sandwich ELISA standard curve of MP02614-1, Human GSTP1 Recombinant Matched Antibody Pair - PBS only. 86708-3-PBS was coated to a plate as the capture antibody and incubated with serial dilutions of standard Ag8731. 86708-2-PBS was HRP conjugated as the detection antibody. Range: 39.1-2500 pg/mL



Plasma of nine individual healthy human donors was measured. The GSTP1 concentration of detected samples was determined to be 32.7 ng/mL with a range of 10.5-115.3 ng/mL



Cytometric bead array standard curve of MP02614-1, GSTP1 Recombinant Matched Antibody Pair, PBS Only. Capture antibody: 86708-3-PBS. Detection antibody: 86708-2-PBS. Standard: Ag8731. Range: 0.156-20 ng/mL



The mean GSTP1 concentration was determined to be 40.6 ng/mL in Human plasma.