

For Research Use Only



PLAP Recombinant Matched Antibody Pair, PBS Only

Catalog Number:MP02613-1

Capture Antibody Information

Catalog Number:
86752-2-PBS
Host:
Rabbit
Isotype:
IgG
Purification Method:
Protein A purification

Clone ID:
251261C4
Reactivity:
human
GenBank:
NM_001632.4
Immunogen Catalog Number:
Eg3065

Conjugate:
Unconjugated
Full name:
alkaline phosphatase, placental (Regan isozyme)
Gene ID:
250

Detection Antibody Information

Catalog Number:
86752-1-PBS
Host:
Rabbit
Isotype:
IgG
Purification Method:
Protein A purification

Clone ID:
251261A2
Reactivity:
human
GenBank:
NM_001632.4
Immunogen Catalog Number:
Eg3065

Conjugate:
Unconjugated
Full name:
alkaline phosphatase, placental (Regan isozyme)
Gene ID:
250

Applications

Tested Applications:
Sandwich ELISA

Range:
0.156-10 ng/mL (Sandwich ELISA)

Recommended Dilutions:
It is recommended that this reagent should be titrated in each testing system to obtain optimal results.

Product Information

MP02613-1 targets PLAP in immunoassays as a matched antibody pair. Validated in Sandwich ELISA.

Capture antibody: ALPP Recombinant antibody, PBS Only (Capture) 86752-2-PBS (251261C4). 100 µg. Concentration 1 mg/mL.

Detection antibody: ALPP Recombinant antibody, PBS Only (Detector) 86752-1-PBS (251261A2). 100 µg. Concentration 1 mg/mL.

Unconjugated rabbit recombinant monoclonal antibody pair in PBS only storage buffer at a concentration of 1 mg/mL, ready for conjugation. Created using Proteintech's proprietary in-house recombinant technology. Recombinant production enables unrivalled batch-to-batch consistency, easy scale-up, and future security of supply.

Matched antibody pairs are designed for use in a variety of assays and platforms that require matched antibody pairs.

Antibody use should be optimized for each application and assay.

Storage

Storage:
Store at -80°C.
The product is shipped with ice packs. Upon receipt, store it immediately at -80°C
Storage buffer:
PBS only

For technical support and original validation data for this product please contact:

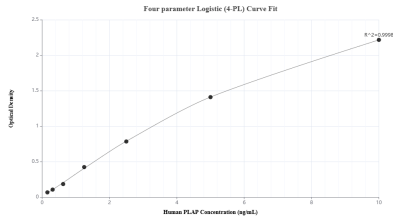
T: 4006900926

E: Proteintech-CN@ptglab.com

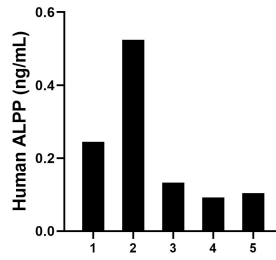
W: ptgcn.com

This product is exclusively available under Proteintech Group brand and is not available to purchase from any other manufacturer.

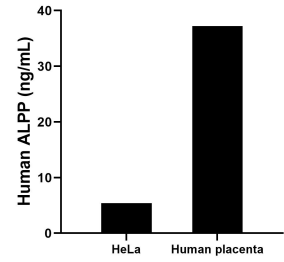
Selected Validation Data



Sandwich ELISA standard curve of MP02613-1, Human PLAP Recombinant Matched Antibody Pair - PBS only. 86752-2-PBS was coated to a plate as the capture antibody and incubated with serial dilutions of standard Eg3065. 86752-1-PBS was HRP conjugated as the detection antibody. Range: 0.156-10 ng/mL



Plasma of five individual healthy human donors was measured. The human PLAP concentration of detected samples was determined to be 0.22 ng/mL with a range of 0.09 - 0.52 ng/mL



The mean PLAP concentration was determined to be 5.44 ng/mL in HeLa cell extract based on a 1.2 mg/mL extract load and 37.23 ng/mL in human placenta tissue extract based on a 3.8 mg/mL extract load.