

For Research Use Only

C5 Recombinant Matched Antibody Pair, PBS Only



Catalog Number:MP02611-1

Capture Antibody Information

Catalog Number:
86463-3-PBS
Host:
Rabbit
Isotype:
IgG
Purification Method:
Protein A purification

Clone ID:
251190F8
Reactivity:
human
GenBank:
NM_001735.3
Immunogen Catalog Number:
Eg4205

Conjugate:
Unconjugated
Full name:
complement component 5
Gene ID:
727

Detection Antibody Information

Catalog Number:
86463-2-PBS
Host:
Rabbit
Isotype:
IgG
Purification Method:
Protein A purification

Clone ID:
251190G12
Reactivity:
human
GenBank:
NM_001735.3
Immunogen Catalog Number:
Eg4205

Conjugate:
Unconjugated
Full name:
complement component 5
Gene ID:
727

Applications

Tested Applications:
Sandwich ELISA

Range:
0.156-10 ng/mL (Sandwich ELISA)

Recommended Dilutions:
It is recommended that this reagent should be titrated in each testing system to obtain optimal results.

Product Information

MP02611-1 targets C5 in immunoassays as a matched antibody pair. Validated in Sandwich ELISA.

Capture antibody: C5 Recombinant monoclonal antibody, PBS Only (Capture) 86463-3-PBS (251190F8). 100 µg. Concentration 1 mg/mL.

Detection antibody: C5 Recombinant monoclonal antibody, PBS Only (Detector) 86463-2-PBS (251190G12). 100 µg. Concentration 1 mg/mL.

Unconjugated rabbit recombinant monoclonal antibody pair in PBS only storage buffer at a concentration of 1 mg/mL, ready for conjugation. Created using Proteintech's proprietary in-house recombinant technology. Recombinant production enables unrivalled batch-to-batch consistency, easy scale-up, and future security of supply.

Matched antibody pairs are designed for use in a variety of assays and platforms that require matched antibody pairs.

Antibody use should be optimized for each application and assay.

Storage

Storage:
Store at -80°C.
The product is shipped with ice packs. Upon receipt, store it immediately at -80°C
Storage buffer:
PBS only

For technical support and original validation data for this product please contact:

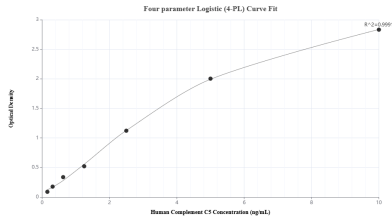
T: 4006900926

E: Proteintech-CN@ptglab.com

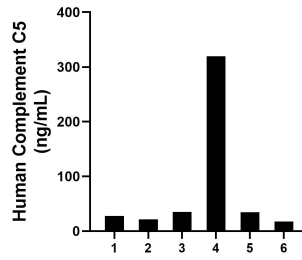
W: ptgcn.com

This product is exclusively available under Proteintech Group brand and is not available to purchase from any other manufacturer.

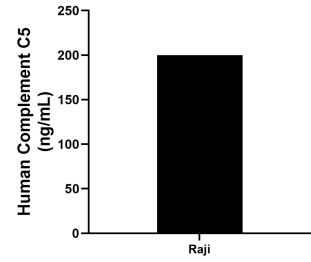
Selected Validation Data



Sandwich ELISA standard curve of MP02611-1, Human Complement C5 Recombinant Matched Antibody Pair - PBS only. 86463-3-PBS was coated to a plate as the capture antibody and incubated with serial dilutions of standard Eg4205. 86463-2-PBS was HRP conjugated as the detection antibody. Range: 0.156-10 ng/mL



Serum of plasma individual healthy human donors was measured. The human Complement C5 concentration of detected samples was determined to be 75.89 ng/mL with a range of 17.23 - 319.31 ng/mL



The mean Complement C5 concentration was determined to be 200.14 ng/mL in C6 cell extract based on a 1.3 mg/mL extract load.