

For Research Use Only

SUPV3L1 Recombinant Matched Antibody Pair, PBS Only



Catalog Number:MP02602-2

Capture Antibody Information

Catalog Number:
86706-2-PBS
Host:
Rabbit
Isotype:
IgG
Purification Method:
Protein A purification

Clone ID:
250855G1
Reactivity:
human
GenBank:
BC036112
Immunogen Catalog Number:
Ag3542

Conjugate:
Unconjugated
Full name:
suppressor of var1, 3-like 1 (S. cerevisiae)
Gene ID:
6832

Detection Antibody Information

Catalog Number:
86706-3-PBS
Host:
Rabbit
Isotype:
IgG
Purification Method:
Protein A purification

Clone ID:
250855A8
Reactivity:
human
GenBank:
BC036112
Immunogen Catalog Number:
Ag3542

Conjugate:
Unconjugated
Full name:
suppressor of var1, 3-like 1 (S. cerevisiae)
Gene ID:
6832

Applications

Tested Applications:
Sandwich ELISA

Range:
78.1-5000 pg/mL (Sandwich ELISA)

Recommended Dilutions:
It is recommended that this reagent should be titrated in each testing system to obtain optimal results.

Product Information

MP02602-2 targets SUPV3L1 in immunoassays as a matched antibody pair. Validated in Sandwich ELISA.

Capture antibody: SUPV3L1 Recombinant monoclonal antibody, PBS Only (Capture) 86706-2-PBS (250855G1). 100 µg. Concentration 1 mg/mL.

Detection antibody: SUPV3L1 Recombinant monoclonal antibody, PBS Only (Detector) 86706-3-PBS (250855A8). 100 µg. Concentration 1 mg/mL.

Unconjugated rabbit recombinant monoclonal antibody pair in PBS only storage buffer at a concentration of 1 mg/mL, ready for conjugation. Created using Proteintech's proprietary in-house recombinant technology. Recombinant production enables unrivalled batch-to-batch consistency, easy scale-up, and future security of supply.

Matched antibody pairs are designed for use in a variety of assays and platforms that require matched antibody pairs.

Antibody use should be optimized for each application and assay.

Storage

Storage:
Store at -80°C.
The product is shipped with ice packs. Upon receipt, store it immediately at -80°C
Storage buffer:
PBS only

For technical support and original validation data for this product please contact:

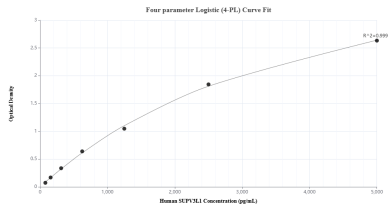
T: 4006900926

E: Proteintech-CN@ptglab.com

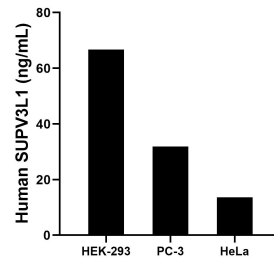
W: ptgcn.com

This product is exclusively available under Proteintech Group brand and is not available to purchase from any other manufacturer.

Selected Validation Data



Sandwich ELISA standard curve of MP02602-2, Human SUPV3L1 Recombinant Matched Antibody Pair - PBS only. 86706-2-PBS was coated to a plate as the capture antibody and incubated with serial dilutions of standard Ag3542. 86706-3-PBS was HRP conjugated as the detection antibody. Range: 78.1-5000 pg/mL



The mean SUPV3L1 concentration was determined to be 66.66 ng/mL in HEK-293 cell extract based on a 1.2 mg/mL extract load, 31.90 ng/mL in PC-3 cell extract based on a 1.3 mg/mL extract load and 13.66 ng/mL in HeLa cell extract based on a 1.2 mg/mL extract load.