

For Research Use Only

# Mouse PTPRZ1 Recombinant Matched Antibody Pair, PBS Only



Catalog Number:MP02599-2

## Capture Antibody Information

Catalog Number:  
86687-1-PBS

Host:  
Rabbit

Isotype:  
IgG

Purification Method:  
Protein A purification

Clone ID:  
251663E4

Reactivity:  
mouse

GenBank:  
NM\_001081306.1

Immunogen Catalog Number:  
Eg6825

Conjugate:  
Unconjugated

Full name:  
protein tyrosine phosphatase,  
receptor type Z, polypeptide 1

Gene ID:  
19283

## Detection Antibody Information

Catalog Number:  
86687-3-PBS

Host:  
Rabbit

Isotype:  
IgG

Purification Method:  
Protein A purification

Clone ID:  
251663D6

Reactivity:  
mouse

GenBank:  
NM\_001081306.1

Immunogen Catalog Number:  
Eg6825

Conjugate:  
Unconjugated

Full name:  
protein tyrosine phosphatase,  
receptor type Z, polypeptide 1

Gene ID:  
19283

## Applications

Tested Applications:  
Sandwich ELISA

Range:  
39.1-2500 pg/mL (Sandwich ELISA)

Recommended Dilutions:  
It is recommended that this reagent  
should be titrated in each testing  
system to obtain optimal results.

## Product Information

MP02599-2 targets PTPRZ1 in immunoassays as a matched antibody pair. Validated in Sandwich ELISA.

Capture antibody: Mouse PTPRZ Recombinant monoclonal antibody, PBS Only (Capture) 86687-1-PBS (251663E4). 100 µg. Concentration 1 mg/mL.

Detection antibody: Mouse PTPRZ Recombinant monoclonal antibody, PBS Only (Capture/Detector) 86687-3-PBS (251663D6). 100 µg. Concentration 1 mg/mL.

Unconjugated rabbit recombinant monoclonal antibody pair in PBS only storage buffer at a concentration of 1 mg/mL, ready for conjugation. Created using Proteintech's proprietary in-house recombinant technology. Recombinant production enables unrivalled batch-to-batch consistency, easy scale-up, and future security of supply.

Matched antibody pairs are designed for use in a variety of assays and platforms that require matched antibody pairs.

Antibody use should be optimized for each application and assay.

## Storage

Storage:  
Store at -80°C.

The product is shipped with ice packs. Upon receipt, store it immediately at -80°C

Storage buffer:  
PBS only

For technical support and original validation data for this product please contact:

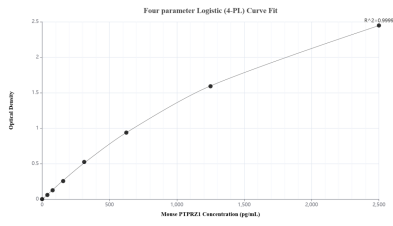
T: 4006900926

E: Proteintech-CN@ptglab.com

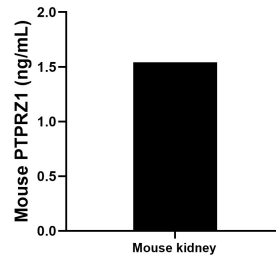
W: ptgcn.com

This product is exclusively available under Proteintech Group brand and is not available to purchase from any other manufacturer.

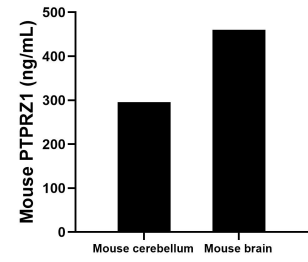
## Selected Validation Data



Sandwich ELISA standard curve of MP02599-2, Mouse PTPRZ1 Recombinant Matched Antibody Pair - PBS only. 86687-1-PBS was coated to a plate as the capture antibody and incubated with serial dilutions of standard Eg6825. 86687-3-PBS was HRP conjugated as the detection antibody. Range: 39.1-2500 pg/mL



The mean PTPRZ1 concentration was determined to be 1.5 ng/mL in mouse kidney tissue extract based on a 7.8 mg/mL extract load.



The mean PTPRZ1 concentration was determined to be 295.4 ng/mL in mouse cerebellum tissue extract based on a 2.9 mg/mL extract load and 460.1 ng/mL in mouse brain tissue extract based on a 3.2 mg/mL extract load.