

For Research Use Only

MBD3 Recombinant Matched Antibody Pair, PBS Only



Catalog Number:MP02598-2

Capture Antibody Information

Catalog Number:

86681-4-PBS

Host:

Rabbit

Isotype:

IgG

Purification Method:

Protein A purification

Clone ID:

250922A10

Reactivity:

human

GenBank:

BC043619

Immunogen Catalog Number:

Ag5531

Conjugate:

Unconjugated

Full name:

methyl-CpG binding domain protein 3

Gene ID:

53615

Detection Antibody Information

Catalog Number:

86681-2-PBS

Host:

Rabbit

Isotype:

IgG

Purification Method:

Protein A purification

Clone ID:

250922E11

Reactivity:

human

GenBank:

BC043619

Immunogen Catalog Number:

Ag5531

Conjugate:

Unconjugated

Full name:

methyl-CpG binding domain protein 3

Gene ID:

53615

Applications

Tested Applications:

Sandwich ELISA

Range:

97.7-6250 pg/mL (Sandwich ELISA)

Recommended Dilutions:

It is recommended that this reagent should be titrated in each testing system to obtain optimal results.

Product Information

MP02598-2 targets MBD3 in immunoassays as a matched antibody pair. Validated in Sandwich ELISA.

Capture antibody: MBD3 Recombinant monoclonal antibody, PBS Only (Capture) 86681-4-PBS (250922A10). 100 μ g. Concentration 1 mg/mL.

Detection antibody: MBD3 Recombinant monoclonal antibody, PBS Only (Detector) 86681-2-PBS (250922E11). 100 μ g. Concentration 1 mg/mL.

Unconjugated rabbit recombinant monoclonal antibody pair in PBS only storage buffer at a concentration of 1 mg/mL, ready for conjugation. Created using Proteintech's proprietary in-house recombinant technology. Recombinant production enables unrivalled batch-to-batch consistency, easy scale-up, and future security of supply.

Matched antibody pairs are designed for use in a variety of assays and platforms that require matched antibody pairs.

Antibody use should be optimized for each application and assay.

Storage

Storage:

Store at -80°C.

The product is shipped with ice packs. Upon receipt, store it immediately at -80°C

Storage buffer:

PBS only

For technical support and original validation data for this product please contact:

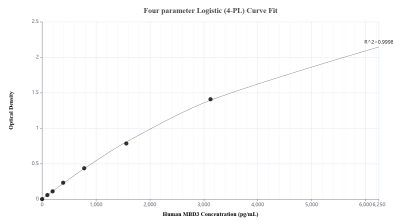
T: 4006900926

E: Proteintech-CN@ptglab.com

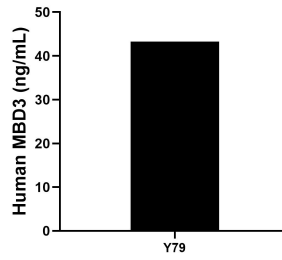
W: ptgcn.com

This product is exclusively available under Proteintech Group brand and is not available to purchase from any other manufacturer.

Selected Validation Data



Sandwich ELISA standard curve of MP02598-2, Human MBD3 Recombinant Matched Antibody Pair - PBS only. 86681-4-PBS was coated to a plate as the capture antibody and incubated with serial dilutions of standard Ag5531. 86681-2-PBS was HRP conjugated as the detection antibody. Range: 97.7-6250 pg/mL



The mean MBD3 concentration was determined to be 43.2 ng/mL in Y79 cell extract based on a 1.1 mg/mL extract load.