

For Research Use Only

CLTC Recombinant Matched Antibody Pair, PBS Only



Catalog Number:MP02577-1

Capture Antibody Information

Catalog Number:
86660-2-PBS

Host:
Rabbit

Isotype:
IgG

Purification Method:
Protein A purification

Clone ID:
251634F10

Reactivity:
human

GenBank:
BC054489

Immunogen Catalog Number:
Ag25041

Conjugate:
Unconjugated

Full name:
clathrin, heavy chain (Hc)

Gene ID:
1213

Detection Antibody Information

Catalog Number:
86660-1-PBS

Host:
Rabbit

Isotype:
IgG

Purification Method:
Protein A purification

Clone ID:
251634B9

Reactivity:
human

GenBank:
BC054489

Immunogen Catalog Number:
Ag25041

Conjugate:
Unconjugated

Full name:
clathrin, heavy chain (Hc)

Gene ID:
1213

Applications

Tested Applications:
Cytometric bead array, Sandwich ELISA

Range:
0.469-60 ng/mL (Cytometric Bead Array)
0.156-10 ng/mL (Sandwich ELISA)

Recommended Dilutions:
It is recommended that this reagent should be titrated in each testing system to obtain optimal results.

Product Information

MP02577-1 targets CLTC in immunoassays as a matched antibody pair. Validated in Cytometric bead array, Sandwich ELISA.

Capture antibody: CLTC Recombinant monoclonal antibody, PBS Only (Capture) 86660-2-PBS (251634F10). 100 µg. Concentration 1 mg/mL.

Detection antibody: CLTC Recombinant monoclonal antibody, PBS Only (Detector) 86660-1-PBS (251634B9). 100 µg. Concentration 1 mg/mL.

Unconjugated rabbit recombinant monoclonal antibody pair in PBS only storage buffer at a concentration of 1 mg/mL, ready for conjugation. Created using Proteintech's proprietary in-house recombinant technology. Recombinant production enables unrivalled batch-to-batch consistency, easy scale-up, and future security of supply.

Matched antibody pairs are designed for use in a variety of assays and platforms that require matched antibody pairs.

Antibody use should be optimized for each application and assay.

Storage

Storage:
Store at -80°C.

The product is shipped with ice packs. Upon receipt, store it immediately at -80°C

Storage buffer:
PBS only

For technical support and original validation data for this product please contact:

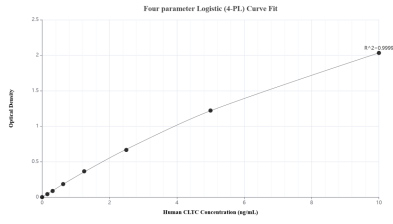
T: 4006900926

E: Proteintech-CN@ptglab.com

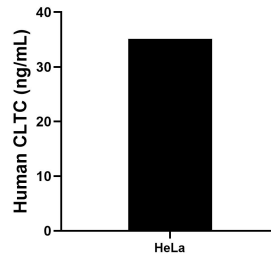
W: ptgcn.com

This product is exclusively available under Proteintech Group brand and is not available to purchase from any other manufacturer.

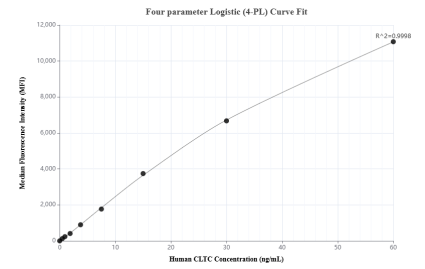
Selected Validation Data



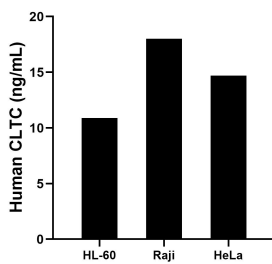
Sandwich ELISA standard curve of MP02577-1, Human CLTC Recombinant Matched Antibody Pair - PBS only. 86660-2-PBS was coated to a plate as the capture antibody and incubated with serial dilutions of standard Ag25041. 86660-1-PBS was HRP conjugated as the detection antibody. Range: 0.156-10 ng/mL



The mean CLTC concentration was determined to be 35.14 ng/mL in HeLa cell extract based on a 1.20 mg/mL extract load.



Cytometric bead array standard curve of MP02577-1, CLTC Recombinant Matched Antibody Pair, PBS Only. Capture antibody: 86660-2-PBS. Detection antibody: 86660-1-PBS. Standard: Ag25041. Range: 0.469-60 ng/mL



The mean CLTC concentration was determined to be 10.9 ng/mL in HL-60 cell extract based on a 1.4 mg/mL extract load, 18.0 ng/mL in Raji cell extract based on a 1.3 mg/mL extract load, 14.7 ng/mL in HeLa cell extract based on a 1.1 mg/mL extract load.