

PD-ECGF/Thymidine Phosphorylase Recombinant Matched Antibody Pair, PBS Only

Catalog Number: **MP02571-1**

Capture Antibody Information

Catalog Number: 86618-1-PBS	Clone ID: 251581E6	Conjugate: Unconjugated
Host: Rabbit	Reactivity: human	Full name: thymidine phosphorylase
Isotype: IgG	GenBank: BC018160	Gene ID: 1890
Purification Method: Protein A purification	Immunogen Catalog Number: Ag3052	

Detection Antibody Information

Catalog Number: 86618-2-PBS	Clone ID: 251581B8	Conjugate: Unconjugated
Host: Rabbit	Reactivity: human	Full name: thymidine phosphorylase
Isotype: IgG	GenBank: BC018160	Gene ID: 1890
Purification Method: Protein A purification	Immunogen Catalog Number: Ag3052	

Applications

Tested Applications: Cytometric bead array, Sandwich ELISA	Range: 0.625-40 ng/mL (Cytometric Bead Array) 78.1-5000 pg/mL (Sandwich ELISA)	Recommended Dilutions: It is recommended that this reagent should be titrated in each testing system to obtain optimal results.
---	--	---

Product Information

MP02571-1 targets PD-ECGF/Thymidine Phosphorylase in immunoassays as a matched antibody pair. Validated in Cytometric bead array, Sandwich ELISA.

Capture antibody: PD-ECGF Recombinant monoclonal antibody, PBS Only (Capture) 86618-1-PBS (251581E6). 100 µg. Concentration 1 mg/mL.

Detection antibody: PD-ECGF Recombinant monoclonal antibody, PBS Only (Detector) 86618-2-PBS (251581B8). 100 µg. Concentration 1 mg/mL.

Unconjugated rabbit recombinant monoclonal antibody pair in PBS only storage buffer at a concentration of 1 mg/mL, ready for conjugation. Created using Proteintech's proprietary in-house recombinant technology. Recombinant production enables unrivalled batch-to-batch consistency, easy scale-up, and future security of supply.

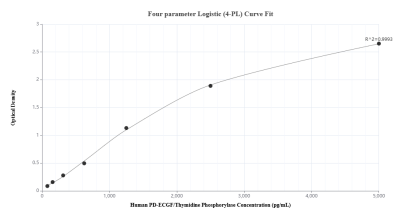
Matched antibody pairs are designed for use in a variety of assays and platforms that require matched antibody pairs.

Antibody use should be optimized for each application and assay.

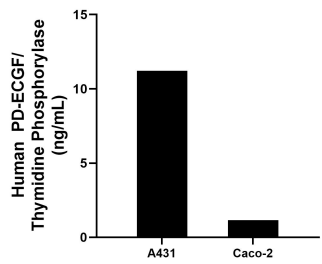
Storage

Storage:
Store at -80°C.
The product is shipped with ice packs. Upon receipt, store it immediately at -80°C
Storage buffer:
PBS only

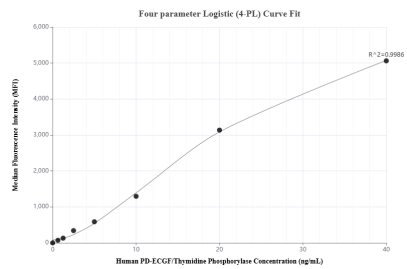
Selected Validation Data



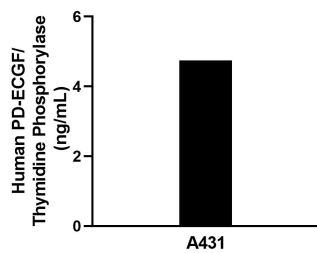
Sandwich ELISA standard curve of MP02571-1, Human PD-ECGF/Thymidine Phosphorylase Recombinant Matched Antibody Pair - PBS only. 86618-1-PBS was coated to a plate as the capture antibody and incubated with serial dilutions of standard Ag3052. 86618-2-PBS was HRP conjugated as the detection antibody. Range: 78.1-5000 pg/mL



The mean PD-ECGF/Thymidine Phosphorylase concentration was determined to be 11.22 ng/mL in A431 cell extract based on a 1.2 mg/mL extract load and 1.16 ng/mL in Caco-2 cell extract based on a 2.7 mg/mL extract load.



Cytometric bead array standard curve of MP02571-1, PD-ECGF/Thymidine Phosphorylase Recombinant Matched Antibody Pair, PBS Only. Capture antibody: 86618-1-PBS. Detection antibody: 86618-2-PBS. Standard: Ag3052. Range: 0.625-40 ng/mL



The mean PD-ECGF/Thymidine Phosphorylase concentration was determined to be 4.8 ng/mL in A431 cell extract based on a 1.2 mg/mL extract load.