

ELAVL2 Recombinant Matched Antibody Pair, PBS Only

Catalog Number: **MP02564-1**

Capture Antibody Information

Catalog Number: 86623-1-PBS	Clone ID: 251573C7	Conjugate: Unconjugated
Host: Rabbit	Reactivity: human	Full name: ELAV (embryonic lethal, abnormal vision, Drosophila)-like 2 (Hu antigen B)
Isotype: IgG	GenBank: BC030692	Gene ID: 1993
Purification Method: Protein A purification	Immunogen Catalog Number: Ag5105	

Detection Antibody Information

Catalog Number: 86623-2-PBS	Clone ID: 251573G9	Conjugate: Unconjugated
Host: Rabbit	Reactivity: human	Full name: ELAV (embryonic lethal, abnormal vision, Drosophila)-like 2 (Hu antigen B)
Isotype: IgG	GenBank: BC030692	Gene ID: 1993
Purification Method: Protein A purification	Immunogen Catalog Number: Ag5105	

Applications

Tested Applications: Cytometric bead array	Range: 0.312-40 ng/mL (Cytometric Bead Array)	Recommended Dilutions: It is recommended that this reagent should be titrated in each testing system to obtain optimal results.
--	---	---

Product Information

MP02564-1 targets ELAVL2 in immunoassays as a matched antibody pair. Validated in Cytometric bead array.

Capture antibody: ELAVL2 Recombinant antibody, PBS Only (Capture) 86623-1-PBS (251573C7). 100 µg. Concentration 1 mg/mL.

Detection antibody: ELAVL2 Recombinant antibody, PBS Only (Detector) 86623-2-PBS (251573G9). 100 µg. Concentration 1 mg/mL.

Unconjugated rabbit recombinant monoclonal antibody pair in PBS only storage buffer at a concentration of 1 mg/mL, ready for conjugation. Created using Proteintech's proprietary in-house recombinant technology. Recombinant production enables unrivalled batch-to-batch consistency, easy scale-up, and future security of supply.

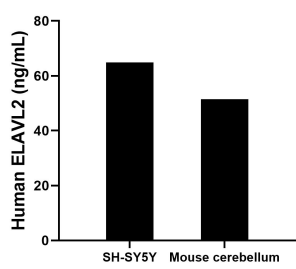
Matched antibody pairs are designed for use in a variety of assays and platforms that require matched antibody pairs.

Antibody use should be optimized for each application and assay.

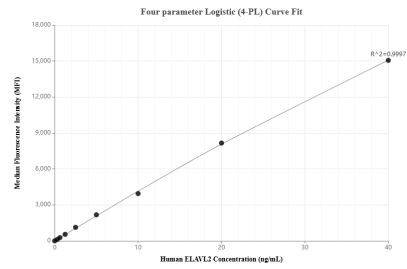
Storage

Storage:
Store at -80°C.
The product is shipped with ice packs. Upon receipt, store it immediately at -80°C
Storage buffer:
PBS only

Selected Validation Data



The mean ELAVL2 concentration was determined to be 64.9 ng/mL in SH-SY5Y cell extract based on a 1.0 mg/mL extract load, 51.5 ng/mL in mouse cerebellum tissue extract based on a 2.9 mg/mL extract load.



Cytometric bead array standard curve of MP02564-1, ELAVL2 Recombinant Matched Antibody Pair, PBS Only. Capture antibody: 86623-1-PBS. Detection antibody: 86623-2-PBS. Standard: Ag5105. Range: 0.312-40 ng/mL.