

LRPPRC Recombinant Matched Antibody Pair, PBS Only

Catalog Number: **MP02559-1**

Capture Antibody Information

Catalog Number: 86616-1-PBS	Clone ID: 251577C1	Conjugate: Unconjugated
Host: Rabbit	Reactivity: human	Full name: leucine-rich PPR-motif containing
Isotype: IgG	GenBank: BC050311	Gene ID: 10128
Purification Method: Protein A purification	Immunogen Catalog Number: Ag15452	

Detection Antibody Information

Catalog Number: 86616-2-PBS	Clone ID: 251577F1	Conjugate: Unconjugated
Host: Rabbit	Reactivity: human	Full name: leucine-rich PPR-motif containing
Isotype: IgG	GenBank: BC050311	Gene ID: 10128
Purification Method: Protein A purification	Immunogen Catalog Number: Ag15452	

Applications

Tested Applications: Cytometric bead array	Range: 1.562-100 ng/mL (Cytometric Bead Array)	Recommended Dilutions: It is recommended that this reagent should be titrated in each testing system to obtain optimal results.
--	--	---

Product Information

MP02559-1 targets LRPPRC in immunoassays as a matched antibody pair. Validated in Cytometric bead array.

Capture antibody: LRPPRC Recombinant antibody, PBS Only (Capture) 86616-1-PBS (251577C1). 100 µg. Concentration 1 mg/mL.

Detection antibody: LRPPRC Recombinant antibody, PBS Only (Detector) 86616-2-PBS (251577F1). 100 µg. Concentration 1 mg/mL.

Unconjugated rabbit recombinant monoclonal antibody pair in PBS only storage buffer at a concentration of 1 mg/mL, ready for conjugation. Created using Proteintech's proprietary in-house recombinant technology. Recombinant production enables unrivalled batch-to-batch consistency, easy scale-up, and future security of supply.

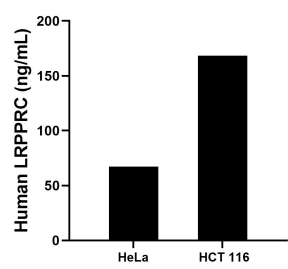
Matched antibody pairs are designed for use in a variety of assays and platforms that require matched antibody pairs.

Antibody use should be optimized for each application and assay.

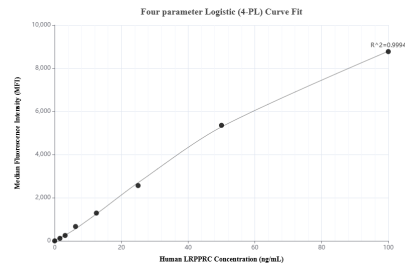
Storage

Storage:
Store at -80°C.
The product is shipped with ice packs. Upon receipt, store it immediately at -80°C
Storage buffer:
PBS only

Selected Validation Data



The mean LRPPRC concentration was determined to be 67.2 ng/mL in HeLa cell extract based on a 1.1 mg/mL extract load, 168.4 ng/mL in HCT 116 cell extract based on a 1.3 mg/mL extract load.



Cytometric bead array standard curve of MP02559-1, LRPPRC Recombinant Matched Antibody Pair, PBS Only. Capture antibody: 86616-1-PBS. Detection antibody: 86616-2-PBS. Standard: Ag15452. Range: 1.562-100 ng/mL.