

G-CSF Recombinant Matched Antibody Pair, PBS Only

Catalog Number: MP02556-1

Capture Antibody Information

Catalog Number:
86376-1-PBS
Host:
Rabbit
Isotype:
IgG
Purification Method:
Protein A purification

Clone ID:
250389H1
Reactivity:
human
GenBank:
Immunogen Catalog Number:
HZ-1207

Conjugate:
Unconjugated
Full name:
colony stimulating factor 3
(granulocyte)
Gene ID:
1440

Detection Antibody Information

Catalog Number:
86376-2-PBS
Host:
Rabbit
Isotype:
IgG
Purification Method:
Protein A purification

Clone ID:
250389A8
Reactivity:
human
GenBank:
Immunogen Catalog Number:
HZ-1207

Conjugate:
Unconjugated
Full name:
colony stimulating factor 3
(granulocyte)
Gene ID:
1440

Applications

Tested Applications:
Sandwich ELISA

Range:
19.5-1250 pg/mL (Sandwich ELISA)

Recommended Dilutions:
It is recommended that this reagent should be titrated in each testing system to obtain optimal results.

Product Information

MP02556-1 targets G-CSF in immunoassays as a matched antibody pair. Validated in Sandwich ELISA.

Capture antibody: G-CSF Recombinant antibody, PBS Only (Capture) 86376-1-PBS (250389H1). 100 µg. Concentration 1 mg/mL.

Detection antibody: G-CSF Recombinant antibody, PBS Only (Detector) 86376-2-PBS (250389A8). 100 µg. Concentration 1 mg/mL.

Unconjugated rabbit recombinant monoclonal antibody pair in PBS only storage buffer at a concentration of 1 mg/mL, ready for conjugation. Created using Proteintech's proprietary in-house recombinant technology. Recombinant production enables unrivalled batch-to-batch consistency, easy scale-up, and future security of supply.

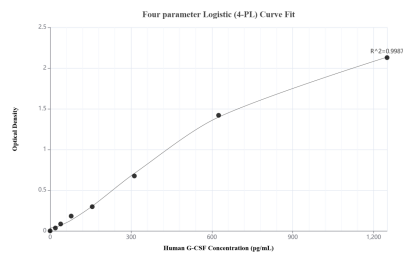
Matched antibody pairs are designed for use in a variety of assays and platforms that require matched antibody pairs.

Antibody use should be optimized for each application and assay.

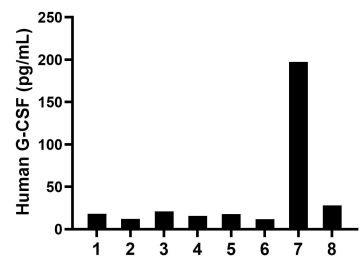
Storage

Storage:
Store at -80°C.
The product is shipped with ice packs. Upon receipt, store it immediately at -80°C
Storage buffer:
PBS only

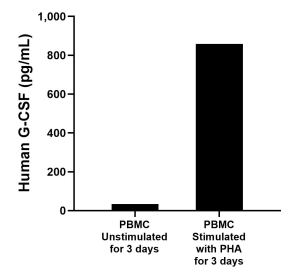
Selected Validation Data



Sandwich ELISA standard curve of MP02556-1, Human G-CSF Recombinant Matched Antibody Pair - PBS only. 86376-1-PBS was coated to a plate as the capture antibody and incubated with serial dilutions of standard HZ-1207. 86376-2-PBS was HRP conjugated as the detection antibody. Range: 19.5-1250 pg/mL



Serum of eight individual healthy human donors was measured. The G-CSF concentration of detected samples was determined to be 40.3 pg/mL with a range of 11.8-197.6 pg/mL



Human peripheral blood mononuclear cells (PBMC) were cultured unstimulated or stimulated with 10 µg/mL PHA for 3 days. The mean G-CSF concentration was determined to be 33.9 pg/mL in unstimulated PBMC supernatant, 858.2 pg/mL in PHA stimulated PBMC supernatant.