

# PRDX6 Recombinant Matched Antibody Pair, PBS Only

Catalog Number: **MP02551-1**

## Capture Antibody Information

Catalog Number:  
86368-1-PBS  
Host:  
Rabbit  
Isotype:  
IgG  
Purification Method:  
Protein A purification

Clone ID:  
251053E8  
Reactivity:  
human, mouse, rat  
GenBank:  
BC035857  
Immunogen Catalog Number:  
Ag4512

Conjugate:  
Unconjugated  
Full name:  
peroxiredoxin 6  
Gene ID:  
9588

## Detection Antibody Information

Catalog Number:  
86368-3-PBS  
Host:  
Rabbit  
Isotype:  
IgG  
Purification Method:  
Protein A purification

Clone ID:  
251053G9  
Reactivity:  
human  
GenBank:  
BC035857  
Immunogen Catalog Number:  
Ag4512

Conjugate:  
Unconjugated  
Full name:  
peroxiredoxin 6  
Gene ID:  
9588

## Applications

Tested Applications:  
Sandwich ELISA

Range:  
0.156-10 ng/mL (Sandwich ELISA)

Recommended Dilutions:  
It is recommended that this reagent should be titrated in each testing system to obtain optimal results.

## Product Information

MP02551-1 targets PRDX6 in immunoassays as a matched antibody pair. Validated in Sandwich ELISA.

Capture antibody: PRDX6 Recombinant monoclonal antibody, PBS Only (Capture) 86368-1-PBS (251053E8). 100 µg. Concentration 1 mg/mL.

Detection antibody: PRDX6 Recombinant monoclonal antibody, PBS Only (Detector) 86368-3-PBS (251053G9). 100 µg. Concentration 1 mg/mL.

Unconjugated rabbit recombinant monoclonal antibody pair in PBS only storage buffer at a concentration of 1 mg/mL, ready for conjugation. Created using Proteintech's proprietary in-house recombinant technology. Recombinant production enables unrivalled batch-to-batch consistency, easy scale-up, and future security of supply.

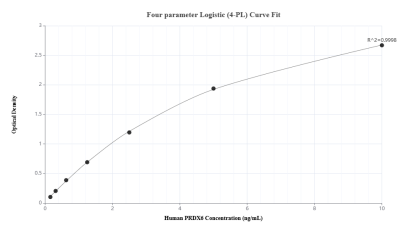
Matched antibody pairs are designed for use in a variety of assays and platforms that require matched antibody pairs.

Antibody use should be optimized for each application and assay.

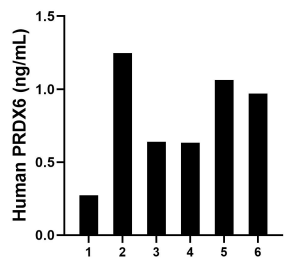
## Storage

Storage:  
Store at -80°C.  
**The product is shipped with ice packs. Upon receipt, store it immediately at -80°C**  
Storage buffer:  
PBS only

## Selected Validation Data



Sandwich ELISA standard curve of MP02551-1, Human PRDX6 Recombinant Matched Antibody Pair - PBS only. 86368-1-PBS was coated to a plate as the capture antibody and incubated with serial dilutions of standard Ag4512. 86368-3-PBS was HRP conjugated as the detection antibody. Range: 0.156-10 ng/mL



Plasma of six individual healthy human donors was measured. The human PRDX6 concentration of detected samples was determined to be 0.80 ng/mL with a range of 0.27 - 1.25 ng/mL