

MTHFD2 Recombinant Matched Antibody Pair, PBS Only

Catalog Number: **MP02548-2**

Capture Antibody Information

Catalog Number:
86608-6-PBS
Host:
Rabbit
Isotype:
IgG
Purification Method:
Protein A purification

Clone ID:
251431D5
Reactivity:
human
GenBank:
BC017054
Immunogen Catalog Number:
Ag2911

Conjugate:
Unconjugated
Full name:
methylene tetrahydrofolate dehydrogenase (NADP+ dependent) 2, methenyl tetrahydrofolate cyclohydrolase
Gene ID:
10797

Detection Antibody Information

Catalog Number:
86608-5-PBS
Host:
Rabbit
Isotype:
IgG
Purification Method:
Protein A purification

Clone ID:
251431G4
Reactivity:
human
GenBank:
BC017054
Immunogen Catalog Number:
Ag2911

Conjugate:
Unconjugated
Full name:
methylene tetrahydrofolate dehydrogenase (NADP+ dependent) 2, methenyl tetrahydrofolate cyclohydrolase
Gene ID:
10797

Applications

Tested Applications:
Sandwich ELISA

Range:
78.1-5000 pg/mL (Sandwich ELISA)

Recommended Dilutions:
It is recommended that this reagent should be titrated in each testing system to obtain optimal results.

Product Information

MP02548-2 targets MTHFD2 in immunoassays as a matched antibody pair. Validated in Sandwich ELISA.

Capture antibody: MTHFD2 Recombinant monoclonal antibody, PBS Only (Capture) 86608-6-PBS (251431D5). 100 µg. Concentration 1 mg/mL.

Detection antibody: MTHFD2 Recombinant monoclonal antibody, PBS Only (Detector) 86608-5-PBS (251431G4). 100 µg. Concentration 1 mg/mL.

Unconjugated rabbit recombinant monoclonal antibody pair in PBS only storage buffer at a concentration of 1 mg/mL, ready for conjugation. Created using Proteintech's proprietary in-house recombinant technology. Recombinant production enables unrivalled batch-to-batch consistency, easy scale-up, and future security of supply.

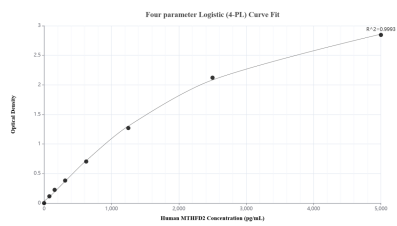
Matched antibody pairs are designed for use in a variety of assays and platforms that require matched antibody pairs.

Antibody use should be optimized for each application and assay.

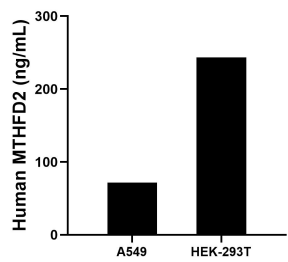
Storage

Storage:
Store at -80°C.
The product is shipped with ice packs. Upon receipt, store it immediately at -80°C
Storage buffer:
PBS only

Selected Validation Data



Sandwich ELISA standard curve of MP02548-2, Human MTHFD2 Recombinant Matched Antibody Pair - PBS only. 86608-6-PBS was coated to a plate as the capture antibody and incubated with serial dilutions of standard Ag2911. 86608-5-PBS was HRP conjugated as the detection antibody. Range: 78.1-5000 pg/mL



The mean MTHFD2 concentration was determined to be 71.5 ng/mL in A549 cell extract based on a 1.2 mg/mL extract load and 243.3 ng/mL in HEK-293T cell extract based on a 1.3 mg/mL extract load.