

MMS2 Recombinant Matched Antibody Pair, PBS Only

Catalog Number:MP02524-1

Capture Antibody Information

Catalog Number:
86551-2-PBS
Host:
Rabbit
Isotype:
IgG
Purification Method:
Protein A purification

Clone ID:
251485H1
Reactivity:
human
GenBank:
BC007051
Immunogen Catalog Number:
Ag1111

Conjugate:
Unconjugated
Full name:
ubiquitin-conjugating enzyme E2 variant 2
Gene ID:
7336

Detection Antibody Information

Catalog Number:
86551-1-PBS
Host:
Rabbit
Isotype:
IgG
Purification Method:
Protein A purification

Clone ID:
251485F1
Reactivity:
human
GenBank:
BC007051
Immunogen Catalog Number:
Ag1111

Conjugate:
Unconjugated
Full name:
ubiquitin-conjugating enzyme E2 variant 2
Gene ID:
7336

Applications

Tested Applications:
Cytometric bead array, Sandwich ELISA

Range:
6.25-200 ng/mL (Cytometric Bead Array)
0.781-50 ng/mL (Sandwich ELISA)

Recommended Dilutions:
It is recommended that this reagent should be titrated in each testing system to obtain optimal results.

Product Information

MP02524-1 targets MMS2 in immunoassays as a matched antibody pair. Validated in Cytometric bead array, Sandwich ELISA.

Capture antibody: UBE2V2 Recombinant monoclonal antibody, PBS Only (Capture) 86551-2-PBS (251485H1). 100 µg. Concentration 1 mg/ml.

Detection antibody: UBE2V2 Recombinant monoclonal antibody, PBS Only (Detector) 86551-1-PBS (251485F1). 100 µg. Concentration 1 mg/ml.

Unconjugated rabbit recombinant monoclonal antibody pair in PBS only storage buffer at a concentration of 1 mg/mL, ready for conjugation. Created using Proteintech's proprietary in-house recombinant technology. Recombinant production enables unrivalled batch-to-batch consistency, easy scale-up, and future security of supply.

Matched antibody pairs are designed for use in a variety of assays and platforms that require matched antibody pairs.

Antibody use should be optimized for each application and assay.

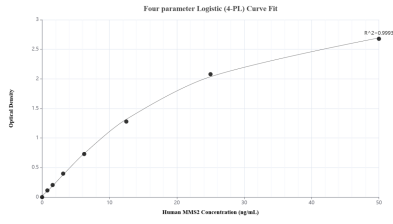
Storage

Storage:
Store at -80°C.

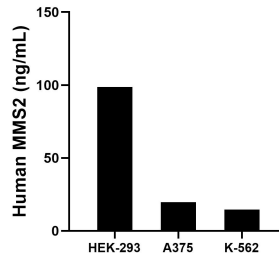
The product is shipped with ice packs. Upon receipt, store it immediately at -80°C

Storage buffer:
PBS only

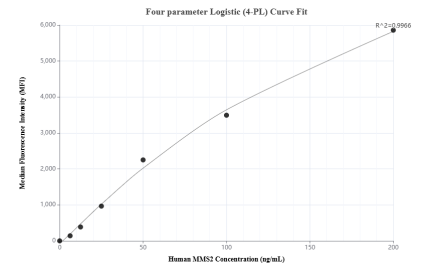
Selected Validation Data



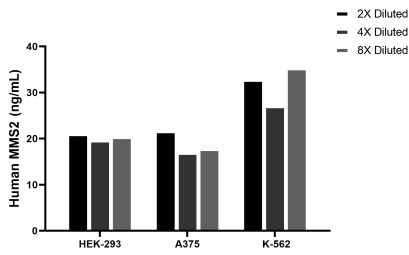
Sandwich ELISA standard curve of MP02524-1, Human MMS2 Recombinant Matched Antibody Pair - PBS only. 86551-2-PBS was coated to a plate as the capture antibody and incubated with serial dilutions of standard Ag1111. 86551-1-PBS was HRP conjugated as the detection antibody. Range: 0.781-50 ng/mL



The mean MMS2 concentration was determined to be 98.67 ng/mL in HEK-293 cell extract based on a 1.20 mg/mL extract load, 19.79 ng/mL in A375 cell extract based on a 1.60 mg/mL extract load and 14.71 ng/mL in K-562 cell extract based on a 1.20 mg/mL extract load.



Cytometric bead array standard curve of MP02524-1, MMS2 Recombinant Matched Antibody Pair, PBS Only. Capture antibody: 86551-2-PBS. Detection antibody: 86551-1-PBS. Standard: Ag1111. Range: 6.25-200 ng/mL



The mean MMS2 concentration was determined to be 20.3 ng/mL in HEK-293 cell extract based on a 1.1 mg/mL extract load, 18.8 ng/mL in A375 cell extract based on a 1.6 mg/mL extract load, 31.7 ng/mL in K-562 cell extract based on a 1.2 mg/mL extract load.