

For Research Use Only

PUM1 Recombinant Matched Antibody Pair, PBS Only



Catalog Number:MP02520-1

Capture Antibody Information

Catalog Number:
86129-2-PBS

Host:
Rabbit

Isotype:
IgG

Purification Method:
Protein A purification

Clone ID:
250792F11

Reactivity:
human

GenBank:
BC013398

Immunogen Catalog Number:
Ag24651

Conjugate:
Unconjugated

Full name:
pumilio homolog 1 (Drosophila)

Gene ID:
9698

Detection Antibody Information

Catalog Number:
86129-3-PBS

Host:
Rabbit

Isotype:
IgG

Purification Method:
Protein A purification

Clone ID:
250792E8

Reactivity:
human

GenBank:
BC013398

Immunogen Catalog Number:
Ag24651

Conjugate:
Unconjugated

Full name:
pumilio homolog 1 (Drosophila)

Gene ID:
9698

Applications

Tested Applications:
Sandwich ELISA

Range:
156-5000 pg/mL (Sandwich ELISA)

Recommended Dilutions:
It is recommended that this reagent should be titrated in each testing system to obtain optimal results.

Product Information

MP02520-1 targets PUM1 in immunoassays as a matched antibody pair. Validated in Sandwich ELISA.

Capture antibody: PUM1 Recombinant monoclonal antibody, PBS Only (Capture) 86129-2-PBS (250792F11). 100 µg. Concentration 1 mg/mL.

Detection antibody: PUM1 Recombinant monoclonal antibody, PBS Only (Detector) 86129-3-PBS (250792E8). 100 µg. Concentration 1 mg/mL.

Unconjugated rabbit recombinant monoclonal antibody pair in PBS only storage buffer at a concentration of 1 mg/mL, ready for conjugation. Created using Proteintech's proprietary in-house recombinant technology. Recombinant production enables unrivalled batch-to-batch consistency, easy scale-up, and future security of supply.

Matched antibody pairs are designed for use in a variety of assays and platforms that require matched antibody pairs.

Antibody use should be optimized for each application and assay.

Storage

Storage:

Store at -80°C.

The product is shipped with ice packs. Upon receipt, store it immediately at -80°C

Storage buffer:

PBS only

For technical support and original validation data for this product please contact:

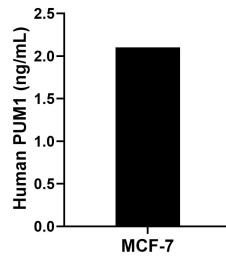
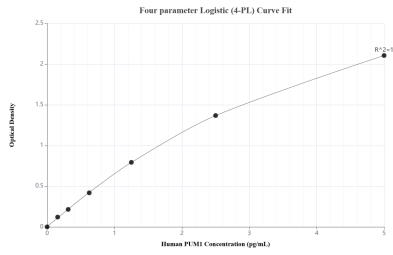
T: 4006900926

E: Proteintech-CN@ptglab.com

W: ptgcn.com

This product is exclusively available under Proteintech Group brand and is not available to purchase from any other manufacturer.

Selected Validation Data



Sandwich ELISA standard curve of MP02520-1, Human PUM1 Recombinant Matched Antibody Pair - PBS only. 86129-2-PBS was coated to a plate as the capture antibody and incubated with serial dilutions of standard Ag24651. 86129-3-PBS was HRP conjugated as the detection antibody. Range: 156-5000 pg/mL.

The mean PUM1 concentration was determined to be 2.1 ng/mL in MCF-7 cell extract based on a 1.3 mg/mL extract load.