

# CNN3 Recombinant Matched Antibody Pair, PBS Only

Catalog Number:MP02515-1

## Capture Antibody Information

**Catalog Number:**  
86550-2-PBS  
**Host:**  
Rabbit  
**Isotype:**  
IgG  
**Purification Method:**  
Protein A purification

**Clone ID:**  
251475E4  
**Reactivity:**  
human  
**GenBank:**  
BC025372  
**Immunogen Catalog Number:**  
Ag2068

**Conjugate:**  
Unconjugated  
**Full name:**  
calponin 3, acidic  
**Gene ID:**  
1266

## Detection Antibody Information

**Catalog Number:**  
86550-1-PBS  
**Host:**  
Rabbit  
**Isotype:**  
IgG  
**Purification Method:**  
Protein A purification

**Clone ID:**  
251475H4  
**Reactivity:**  
human  
**GenBank:**  
BC025372  
**Immunogen Catalog Number:**  
Ag2068

**Conjugate:**  
Unconjugated  
**Full name:**  
calponin 3, acidic  
**Gene ID:**  
1266

## Applications

**Tested Applications:**  
Cytometric bead array, Sandwich ELISA

**Range:**  
0.625-80 ng/mL (Cytometric Bead Array)  
0.391-25 ng/mL (Sandwich ELISA)

**Recommended Dilutions:**  
It is recommended that this reagent should be titrated in each testing system to obtain optimal results.

## Product Information

MP02515-1 targets CNN3 in immunoassays as a matched antibody pair. Validated in Cytometric bead array, Sandwich ELISA.

Capture antibody: CNN3 Recombinant monoclonal antibody, PBS Only (Capture) 86550-2-PBS (251475E4). 100 µg. Concentration 1 mg/mL.

Detection antibody: CNN3 Recombinant monoclonal antibody, PBS Only (Detector) 86550-1-PBS (251475H4). 100 µg. Concentration 1 mg/mL.

Unconjugated rabbit recombinant monoclonal antibody pair in PBS only storage buffer at a concentration of 1 mg/mL, ready for conjugation. Created using Proteintech's proprietary in-house recombinant technology. Recombinant production enables unrivalled batch-to-batch consistency, easy scale-up, and future security of supply.

Matched antibody pairs are designed for use in a variety of assays and platforms that require matched antibody pairs.

Antibody use should be optimized for each application and assay.

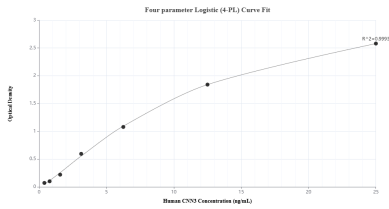
## Storage

**Storage:**  
Store at -80°C.

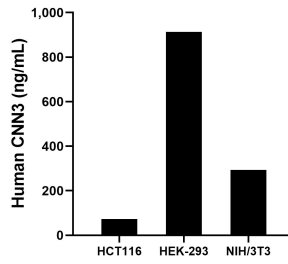
**The product is shipped with ice packs. Upon receipt, store it immediately at -80°C**

**Storage buffer:**  
PBS only

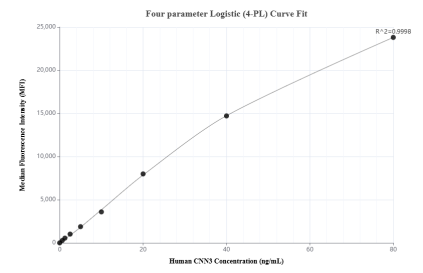
## Selected Validation Data



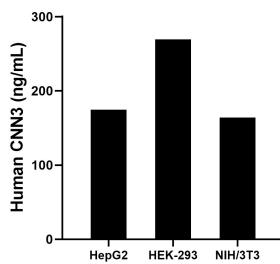
Sandwich ELISA standard curve of MP02515-1, Human CNN3 Recombinant Matched Antibody Pair - PBS only. 86550-2-PBS was coated to a plate as the capture antibody and incubated with serial dilutions of standard Ag2068. 86550-1-PBS was HRP conjugated as the detection antibody. Range: 0.391-25 ng/mL



The mean CNN3 concentration was determined to be 73.47 ng/mL in HCT116 cell extract based on a 1.3 mg/mL extract load, 913.07 ng/mL in HEK-293 cell extract based on a 1.2 mg/mL extract load and 292.95 ng/mL in NIH/3T3 cell extract based on a 1.2 mg/mL extract load.



Cytometric bead array standard curve of MP02515-1, CNN3 Recombinant Matched Antibody Pair, PBS Only. Capture antibody: 86550-2-PBS. Detection antibody: 86550-1-PBS. Standard: Ag2068. Range: 0.625-80 ng/mL



The mean CNN3 concentration was determined to be 176.6 ng/mL in HepG2 cell extract based on a 1.5 mg/mL extract load, 269.5 ng/mL in HEK-293 cell extract based on a 1.1 mg/mL extract load, 164.0 ng/mL in NIH/3T3 cell extract based on a 1.4 mg/mL extract load.