

Citrate synthase Recombinant Matched Antibody Pair, PBS Only

Catalog Number: **MP02513-1**

Capture Antibody Information

Catalog Number:
86549-2-PBS
Host:
Rabbit
Isotype:
IgG
Purification Method:
Protein A purification

Clone ID:
251433D8
Reactivity:
human
GenBank:
BC010106
Immunogen Catalog Number:
Ag9117

Conjugate:
Unconjugated
Full name:
citrate synthase
Gene ID:
1431

Detection Antibody Information

Catalog Number:
86549-1-PBS
Host:
Rabbit
Isotype:
IgG
Purification Method:
Protein A purification

Clone ID:
251433D2
Reactivity:
human
GenBank:
BC010106
Immunogen Catalog Number:
Ag9117

Conjugate:
Unconjugated
Full name:
citrate synthase
Gene ID:
1431

Applications

Tested Applications:
Cytometric bead array

Range:
6.25-200 ng/mL (Cytometric Bead Array)

Recommended Dilutions:
It is recommended that this reagent should be titrated in each testing system to obtain optimal results.

Product Information

MP02513-1 targets Citrate synthase in immunoassays as a matched antibody pair. Validated in Cytometric bead array.

Capture antibody: CS Recombinant antibody, PBS Only (Capture) 86549-2-PBS (251433D8). 100 µg. Concentration 1 mg/mL.

Detection antibody: CS Recombinant antibody, PBS Only (Detector) 86549-1-PBS (251433D2). 100 µg. Concentration 1 mg/mL.

Unconjugated rabbit recombinant monoclonal antibody pair in PBS only storage buffer at a concentration of 1 mg/mL, ready for conjugation. Created using Proteintech's proprietary in-house recombinant technology. Recombinant production enables unrivalled batch-to-batch consistency, easy scale-up, and future security of supply.

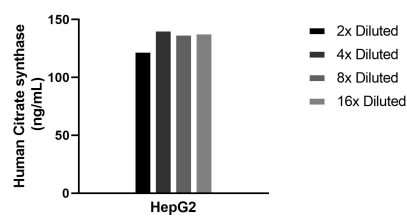
Matched antibody pairs are designed for use in a variety of assays and platforms that require matched antibody pairs.

Antibody use should be optimized for each application and assay.

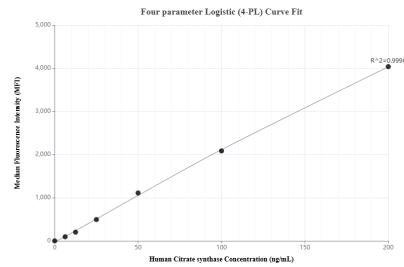
Storage

Storage:
Store at -80°C.
The product is shipped with ice packs. Upon receipt, store it immediately at -80°C
Storage buffer:
PBS only

Selected Validation Data



The mean Citrate synthase concentration was determined to be 135.1 ng/mL in HepG2 cell extract based on a 1.3 mg/mL extract load.



Cytometric bead array standard curve of MP02513-1, Citrate synthase Recombinant Matched Antibody Pair, PBS Only. Capture antibody: 86549-2-PBS. Detection antibody: 86549-1-PBS. Standard: Ag9117. Range: 6.25-200 ng/mL.