

ALOX15B Recombinant Matched Antibody Pair, PBS Only

Catalog Number: **MP02510-1**

Capture Antibody Information

Catalog Number: 86146-1-PBS	Clone ID: 250442C5	Conjugate: Unconjugated
Host: Rabbit	Reactivity: human	Full name: arachidonate 15-lipoxygenase, type B
Isotype: IgG	GenBank: BC035217	Gene ID: 247
Purification Method: Protein A purification	Immunogen Catalog Number: Ag3741	

Detection Antibody Information

Catalog Number: 86146-2-PBS	Clone ID: 250442A8	Conjugate: Unconjugated
Host: Rabbit	Reactivity: human	Full name: arachidonate 15-lipoxygenase, type B
Isotype: IgG	GenBank: BC035217	Gene ID: 247
Purification Method: Protein A purification	Immunogen Catalog Number: Ag3741	

Applications

Tested Applications: Cytometric bead array	Range: 0.938-60 ng/mL (Cytometric Bead Array)	Recommended Dilutions: It is recommended that this reagent should be titrated in each testing system to obtain optimal results.
--	---	---

Product Information

MP02510-1 targets ALOX15B in immunoassays as a matched antibody pair. Validated in Cytometric bead array.

Capture antibody: ALOX15B Recombinant antibody, PBS Only (Capture) 86146-1-PBS (250442C5). 100 µg. Concentration 1 mg/mL.

Detection antibody: ALOX15B Recombinant antibody, PBS Only (Detector) 86146-2-PBS (250442A8). 100 µg. Concentration 1 mg/mL.

Unconjugated rabbit recombinant monoclonal antibody pair in PBS only storage buffer at a concentration of 1 mg/mL, ready for conjugation. Created using Proteintech's proprietary in-house recombinant technology. Recombinant production enables unrivalled batch-to-batch consistency, easy scale-up, and future security of supply.

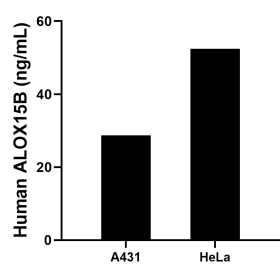
Matched antibody pairs are designed for use in a variety of assays and platforms that require matched antibody pairs.

Antibody use should be optimized for each application and assay.

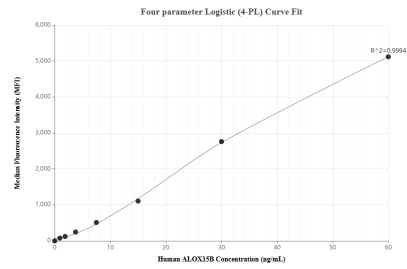
Storage

Storage:
Store at -80°C.
The product is shipped with ice packs. Upon receipt, store it immediately at -80°C
Storage buffer:
PBS only

Selected Validation Data



The mean ALOX15B concentration was determined to be 28.7 ng/mL in A431 cell extract based on a 1.6 mg/mL extract load, 52.4 ng/mL in HeLa cell extract based on a 1.2 mg/mL extract load.



Cytometric bead array standard curve of MP02510-1, ALOX15B Recombinant Matched Antibody Pair, PBS Only. Capture antibody: 86146-1-PBS. Detection antibody: 86146-2-PBS. Standard: Ag3741. Range: 0.938-60 ng/mL.