

Shootin 1 Recombinant Matched Antibody Pair, PBS Only

Catalog Number: **MP02499-1**

Capture Antibody Information

Catalog Number: 86541-2-PBS	Clone ID: 251435E5	Conjugate: Unconjugated
Host: Rabbit	Reactivity: human	Full name: KIAA1598
Isotype: IgG	GenBank: BC022348	Gene ID: 57698
Purification Method: Protein A purification	Immunogen Catalog Number: Ag18294	

Detection Antibody Information

Catalog Number: 86541-1-PBS	Clone ID: 251435A2	Conjugate: Unconjugated
Host: Rabbit	Reactivity: human	Full name: KIAA1598
Isotype: IgG	GenBank: BC022348	Gene ID: 57698
Purification Method: Protein A purification	Immunogen Catalog Number: Ag18294	

Applications

Tested Applications: Cytometric bead array	Range: 0.781-100 ng/mL (Cytometric Bead Array)	Recommended Dilutions: It is recommended that this reagent should be titrated in each testing system to obtain optimal results.
---	---	--

Product Information

MP02499-1 targets Shootin 1 in immunoassays as a matched antibody pair. Validated in Cytometric bead array.

Capture antibody: KIAA1598 Recombinant antibody, PBS Only (Capture) 86541-2-PBS (251435E5). 100 µg. Concentration 1 mg/mL.

Detection antibody: KIAA1598 Recombinant antibody, PBS Only (Detector) 86541-1-PBS (251435A2). 100 µg. Concentration 1 mg/mL.

Unconjugated rabbit recombinant monoclonal antibody pair in PBS only storage buffer at a concentration of 1 mg/mL, ready for conjugation. Created using Proteintech's proprietary in-house recombinant technology. Recombinant production enables unrivalled batch-to-batch consistency, easy scale-up, and future security of supply.

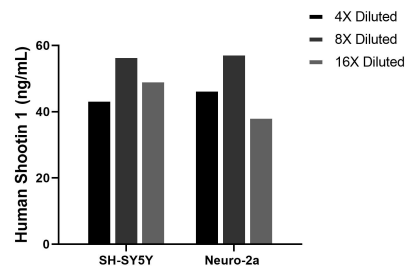
Matched antibody pairs are designed for use in a variety of assays and platforms that require matched antibody pairs.

Antibody use should be optimized for each application and assay.

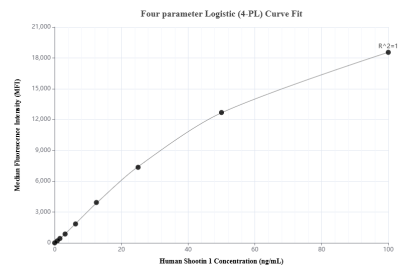
Storage

Storage:
Store at -80°C.
The product is shipped with ice packs. Upon receipt, store it immediately at -80°C
 Storage buffer:
 PBS only

Selected Validation Data



The mean Shootin 1 concentration was determined to be 50.1 ng/mL in SH-SY5Y cell extract based on a 1.4 mg/mL extract load, 47.7 ng/mL in Neuro-2a cell extract based on a 1.6 mg/mL extract load.



Cytometric bead array standard curve of MP02499-1, Shootin 1 Recombinant Matched Antibody Pair, PBS Only. Capture antibody: 86541-2-PBS. Detection antibody: 86541-1-PBS. Standard: Ag18294. Range: 0.781-100 ng/mL.