

SKIV2L2 Recombinant Matched Antibody Pair, PBS Only

Catalog Number: MP02496-1

Capture Antibody Information

Catalog Number:
86536-2-PBS

Host:
Rabbit

Isotype:
IgG

Purification Method:
Protein A purification

Clone ID:
251430D10

Reactivity:
human

GenBank:
BC028604

Immunogen Catalog Number:
Ag3414

Conjugate:
Unconjugated

Full name:
superkiller viralicidic activity 2-like 2 (S. cerevisiae)

Gene ID:
23517

Detection Antibody Information

Catalog Number:
86536-1-PBS

Host:
Rabbit

Isotype:
IgG

Purification Method:
Protein A purification

Clone ID:
251430D11

Reactivity:
human, mouse

GenBank:
BC028604

Immunogen Catalog Number:
Ag3414

Conjugate:
Unconjugated

Full name:
superkiller viralicidic activity 2-like 2 (S. cerevisiae)

Gene ID:
23517

Applications

Tested Applications:
Cytometric bead array

Range:
0.469-60 ng/mL (Cytometric Bead Array)

Recommended Dilutions:
It is recommended that this reagent should be titrated in each testing system to obtain optimal results.

Product Information

MP02496-1 targets SKIV2L2 in immunoassays as a matched antibody pair. Validated in Cytometric bead array.

Capture antibody: SKIV2L2 Recombinant monoclonal antibody, PBS Only (Capture) 86536-2-PBS (251430D10). 100 µg. Concentration 1 mg/mL.

Detection antibody: SKIV2L2 Recombinant monoclonal antibody, PBS Only (Detector) 86536-1-PBS (251430D11). 100 µg. Concentration 1 mg/mL.

Unconjugated rabbit recombinant monoclonal antibody pair in PBS only storage buffer at a concentration of 1 mg/mL, ready for conjugation. Created using Proteintech's proprietary in-house recombinant technology. Recombinant production enables unrivalled batch-to-batch consistency, easy scale-up, and future security of supply.

Matched antibody pairs are designed for use in a variety of assays and platforms that require matched antibody pairs.

Antibody use should be optimized for each application and assay.

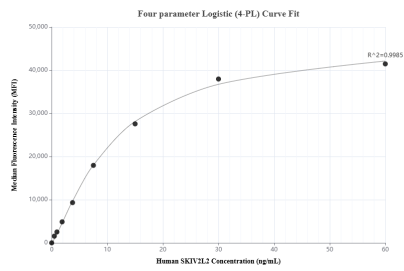
Storage

Storage:
Store at -80°C.

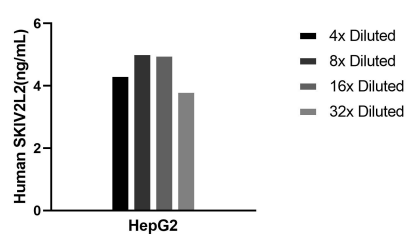
The product is shipped with ice packs. Upon receipt, store it immediately at -80°C

Storage buffer:
PBS only

Selected Validation Data



Cytometric bead array standard curve of MPO2496-1, SKIV2L2 Recombinant Matched Antibody Pair, PBS Only. Capture antibody: 86536-2-PBS. Detection antibody: 86536-1-PBS. Standard: Ag3414. Range: 0.469-60 ng/mL



The mean SKIV2L2 concentration was determined to be 4.6 ng/mL in HepG2 cell extract based on a 1.1 mg/mL extract load.