

# MSPR/Ron/CD136 Recombinant Matched Antibody Pair, PBS Only

Catalog Number:MP02494-1

## Capture Antibody Information

**Catalog Number:**  
86539-2-PBS  
**Host:**  
Rabbit  
**Isotype:**  
IgG  
**Purification Method:**  
Protein A purification

**Clone ID:**  
251102G6  
**Reactivity:**  
human  
**GenBank:**  
NM\_002447.4  
**Immunogen Catalog Number:**  
Eg3493

**Conjugate:**  
Unconjugated  
**Full name:**  
macrophage stimulating 1 receptor (c-met-related tyrosine kinase)  
**Gene ID:**  
4486

## Detection Antibody Information

**Catalog Number:**  
86539-1-PBS  
**Host:**  
Rabbit  
**Isotype:**  
IgG  
**Purification Method:**  
Protein A purification

**Clone ID:**  
251102E4  
**Reactivity:**  
human  
**GenBank:**  
NM\_002447.4  
**Immunogen Catalog Number:**  
Eg3493

**Conjugate:**  
Unconjugated  
**Full name:**  
macrophage stimulating 1 receptor (c-met-related tyrosine kinase)  
**Gene ID:**  
4486

## Applications

**Tested Applications:**  
Cytometric bead array, Sandwich ELISA

**Range:**  
0.156-20 ng/mL (Cytometric Bead Array)  
19.5-1250 pg/mL (Sandwich ELISA)

**Recommended Dilutions:**  
It is recommended that this reagent should be titrated in each testing system to obtain optimal results.

## Product Information

MP02494-1 targets MSPR/Ron/CD136 in immunoassays as a matched antibody pair. Validated in Cytometric bead array, Sandwich ELISA.

Capture antibody: MSPR/Ron/CD136 Recombinant monoclonal antibody, PBS Only (Capture) 86539-2-PBS (251102G6). 100 µg. Concentration 1 mg/mL.

Detection antibody: MSPR/Ron/CD136 Recombinant monoclonal antibody, PBS Only (Detector) 86539-1-PBS (251102E4). 100 µg. Concentration 1 mg/mL.

Unconjugated rabbit recombinant monoclonal antibody pair in PBS only storage buffer at a concentration of 1 mg/mL, ready for conjugation. Created using Proteintech's proprietary in-house recombinant technology. Recombinant production enables unrivalled batch-to-batch consistency, easy scale-up, and future security of supply.

Matched antibody pairs are designed for use in a variety of assays and platforms that require matched antibody pairs.

Antibody use should be optimized for each application and assay.

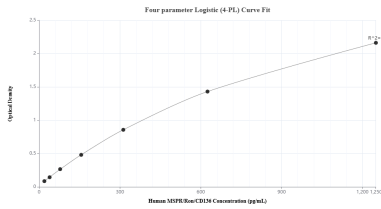
## Storage

**Storage:**  
Store at -80°C.

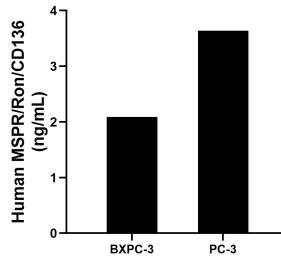
**The product is shipped with ice packs. Upon receipt, store it immediately at -80°C**

**Storage buffer:**  
PBS only

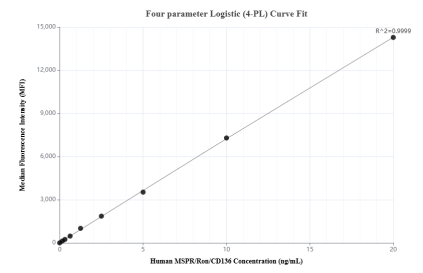
## Selected Validation Data



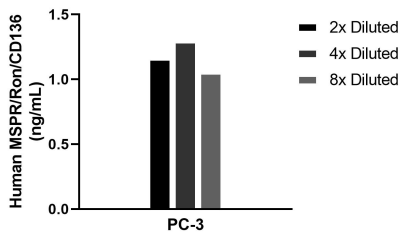
Sandwich ELISA standard curve of MP02494-1, Human MSPR/Ron/CD136 Recombinant Matched Antibody Pair - PBS only. 86539-2-PBS was coated to a plate as the capture antibody and incubated with serial dilutions of standard Eg3493. 86539-1-PBS was HRP conjugated as the detection antibody. Range: 19.5-1250 pg/mL



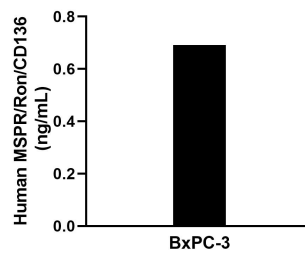
The mean MSPR/Ron/CD136 concentration was determined to be 2.09 ng/mL in BxPC-3 cell extract based on a 1.2 mg/mL extract load and 3.64 ng/mL in PC-3 cell extract based on a 1.3 mg/mL extract load.



Cytometric bead array standard curve of MP02494-1, MSPR/Ron/CD136 Recombinant Matched Antibody Pair, PBS Only. Capture antibody: 86539-2-PBS. Detection antibody: 86539-1-PBS. Standard: Eg3493. Range: 0.156-20 ng/mL



The mean MSPR/Ron/CD136 concentration was determined to be 1.2 ng/mL in PC-3 cell extract based on a 1.1 mg/mL extract load.



The mean MSPR/Ron/CD136 concentration was determined to be 0.7 ng/mL in BxPC-3 cell extract based on a 5.4 mg/mL extract load.