

For Research Use Only

Mouse JAM-A/CD321 Recombinant Matched Antibody Pair, PBS Only



Catalog Number:MP02492-1

Capture Antibody Information

Catalog Number:
86229-4-PBS
Host:
Rabbit
Isotype:
IgG
Purification Method:
Protein A purification

Clone ID:
250060G12
Reactivity:
mouse
GenBank:
NM_172647.2
Immunogen Catalog Number:
Eg3117

Conjugate:
Unconjugated
Full name:
F11 receptor
Gene ID:
16456

Detection Antibody Information

Catalog Number:
86229-3-PBS
Host:
Rabbit
Isotype:
IgG
Purification Method:
Protein A purification

Clone ID:
250060G8
Reactivity:
mouse
GenBank:
NM_172647.2
Immunogen Catalog Number:
Eg3117

Conjugate:
Unconjugated
Full name:
F11 receptor
Gene ID:
16456

Applications

Tested Applications:
Sandwich ELISA

Range:
31.25-2000 pg/mL (Sandwich ELISA)

Recommended Dilutions:
It is recommended that this reagent should be titrated in each testing system to obtain optimal results.

Product Information

MP02492-1 targets JAM-A/CD321 in immunoassays as a matched antibody pair. Validated in Sandwich ELISA.
Capture antibody: Mouse F11r (CD321) Recombinant antibody, PBS Only (Capture) 86229-4-PBS (250060G12). 100 µg. Concentration 1 mg/mL.
Detection antibody: Mouse F11r (CD321) Recombinant antibody, PBS Only (Detector) 86229-3-PBS (250060G8). 100 µg. Concentration 1 mg/mL.
Unconjugated rabbit recombinant monoclonal antibody pair in PBS only storage buffer at a concentration of 1 mg/mL, ready for conjugation. Created using Proteintech's proprietary in-house recombinant technology. Recombinant production enables unrivalled batch-to-batch consistency, easy scale-up, and future security of supply.
Matched antibody pairs are designed for use in a variety of assays and platforms that require matched antibody pairs.
Antibody use should be optimized for each application and assay.

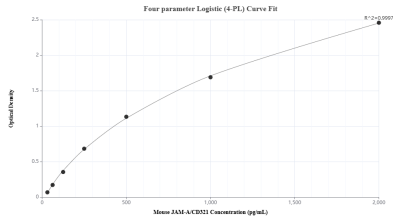
Storage

Storage:
Store at -80°C.
The product is shipped with ice packs. Upon receipt, store it immediately at -80°C
Storage buffer:
PBS only

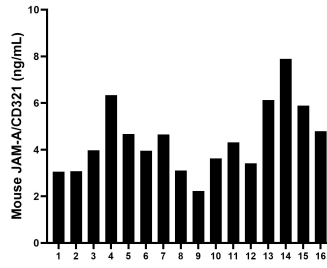
For technical support and original validation data for this product please contact:
T: 4006900926 E: Proteintech-CN@ptglab.com W: ptgcn.com

This product is exclusively available under Proteintech Group brand and is not available to purchase from any other manufacturer.

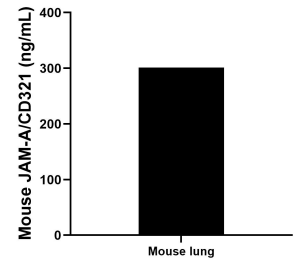
Selected Validation Data



Sandwich ELISA standard curve of MP02492-1, Mouse JAM-A/CD321 Recombinant Matched Antibody Pair - PBS only. 86229-4-PBS was coated to a plate as the capture antibody and incubated with serial dilutions of standard Eg3117. 86229-3-PBS was HRP conjugated as the detection antibody. Range: 31.25-2000 pg/mL



Serum of sixteen mice was measured. The mouse JAM-A/CD321 concentration of detected samples was determined to be 4.44 ng/mL with a range of 2.23 - 7.90 ng/mL.



The mean JAM-A/CD321 concentration was determined to be 301.19 ng/mL in mouse lung tissue extract based on a 5.3 mg/mL extract load.