

Mouse DKK1 Recombinant Matched Antibody Pair, PBS Only

Catalog Number: MP02491-1

Capture Antibody Information

Catalog Number: 86207-1-PBS	Clone ID: 250658B2	Conjugate: Unconjugated
Host: Rabbit	Reactivity: mouse, rat	Full name: dickkopf homolog 1 (Xenopus laevis)
Isotype: IgG	GenBank: NM_010051.3	Gene ID: 13380
Purification Method: Protein A purification	Immunogen Catalog Number: Eg4649	

Detection Antibody Information

Catalog Number: 86207-2-PBS	Clone ID: 250658A3	Conjugate: Unconjugated
Host: Rabbit	Reactivity: mouse	Full name: dickkopf homolog 1 (Xenopus laevis)
Isotype: IgG	GenBank: NM_010051.3	Gene ID: 13380
Purification Method: Protein A purification	Immunogen Catalog Number: Eg4649	

Applications

Tested Applications: Sandwich ELISA	Range: 0.156-10 ng/mL (Sandwich ELISA)	Recommended Dilutions: It is recommended that this reagent should be titrated in each testing system to obtain optimal results.
--	---	--

Product Information

MP02491-1 targets DKK1 in immunoassays as a matched antibody pair. Validated in Sandwich ELISA.

Capture antibody: Mouse DKK1 Recombinant antibody, PBS Only (Capture) 86207-1-PBS (250658B2). 100 µg. Concentration 1 mg/mL.

Detection antibody: Mouse Dkk-1 Recombinant antibody, PBS Only (Detector) 86207-2-PBS (250658A3). 100 µg. Concentration 1 mg/mL.

Unconjugated rabbit recombinant monoclonal antibody pair in PBS only storage buffer at a concentration of 1 mg/mL, ready for conjugation. Created using Proteintech's proprietary in-house recombinant technology. Recombinant production enables unrivalled batch-to-batch consistency, easy scale-up, and future security of supply.

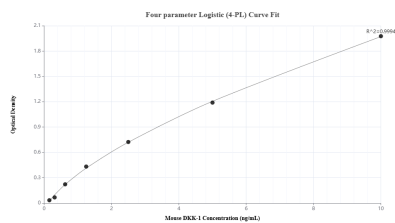
Matched antibody pairs are designed for use in a variety of assays and platforms that require matched antibody pairs.

Antibody use should be optimized for each application and assay.

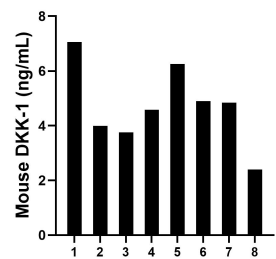
Storage

Storage:
Store at -80°C.
The product is shipped with ice packs. Upon receipt, store it immediately at -80°C
Storage buffer:
PBS only

Selected Validation Data



Sandwich ELISA standard curve of MP02491-1, Mouse DKK1 Recombinant Matched Antibody Pair - PBS only. 86207-1-PBS was coated to a plate as the capture antibody and incubated with serial dilutions of standard Eg4649. 86207-2-PBS was HRP conjugated as the detection antibody. Range: 0.156-10 ng/mL



Serum of eight mice was measured. The mouse DKK1 concentration of detected samples was determined to be 4.72 ng/mL with a range of 2.40 - 7.06 ng/mL